

AGENDA

Meeting: AMESBURY AREA BOARD

Place: South Newton & Great Wishford Village Hall, Warminster Road, Stoford,
Salisbury SP2 0QW

Date: Thursday 2 March 2017

Time: 7.00 pm

Including the Parishes of Allington, Amesbury, Berwick St James, Bulford, Cholderton, Durnford, Durrington, Figcheldean, Great Wishford, Idmiston, Milston, Newton Toney, Orcheston, Shrewton, Stapleford, Steeple Langford, Tilshead, Wilsford Cum Lake, Winterbourne, Winterbourne Stoke, Woodford and Wylve.

The Area Board welcomes and invites contributions from members of the public. The chairman will try to ensure that everyone who wishes to speak will have the opportunity to do so.

If you have any requirements that would make your attendance at the meeting easier, please contact your Democratic Services Officer.

Networking opportunities will be available from 6:30pm.

Please direct any enquiries on this Agenda to Lisa Moore Democratic Services Officer, on 01722 434560 or email jessica.croman@wiltshire.gov.uk / lisa.moore@wiltshire.gov.uk

All the papers connected with this meeting are available on the Council's website at www.wiltshire.gov.uk

Press enquiries to Communications on direct lines (01225) 713114 / 713115.

Wiltshire Councillors

Cllr Ian West, Till and Wylve Valley (Chairman)
Cllr Graham Wright, Durrington and Larkhill (Vice Chairman)
Cllr Mike Hewitt, Bourne and Woodford Valley
Cllr John Smale, Bulford, Allington and Figcheldean
Cllr Fred Westmoreland, Amesbury West
Cllr Jamie Capp, Amesbury East

Broadcasting Notice

Wiltshire Council may record this meeting for live and/or subsequent broadcast on the Council's website at <http://www.wiltshire.public-i.tv>. At the start of the meeting, the Chairman will confirm if all or part of the meeting is being recorded. The images and sound recordings may also be used for training purposes within the Council.

By entering the meeting room you are consenting to being recorded and to the use of those images and recordings for broadcasting and/or training purposes.

The meeting may also be recorded by the press or members of the public.

Any person or organisation choosing to film, record or broadcast any meeting of the Council, its Cabinet or committees is responsible for any claims or other liability resulting from them so doing and by choosing to film, record or broadcast proceedings they accept that they are required to indemnify the Council, its members and officers in relation to any such claims or liabilities.

Details of the Council's Guidance on the Recording and Webcasting of Meetings is available on request.

If you have any queries, please contact Democratic Services using the contact details above.

Items to be considered

- | | | |
|---|--|---------------|
| 1 | Welcome and Introductions <i>(Pages 1 - 2)</i> | 7.00pm |
| 2 | Apologies for Absence | |
| 3 | Minutes <i>(Pages 3 - 6)</i>

To confirm the minutes of the meeting held on 16 January 2017. | |
| 4 | Declarations of Interest

To receive any declarations of disclosable interests or dispensations granted by the Standards Committee. | |
| 5 | Chairman's Announcements

The Chairman will introduce the announcements and invite any questions. <ul style="list-style-type: none">• A303 consultation | 7.05pm |
| 6 | Updates from Partners and Town/Parish Councils <i>(Pages 7 - 12)</i>

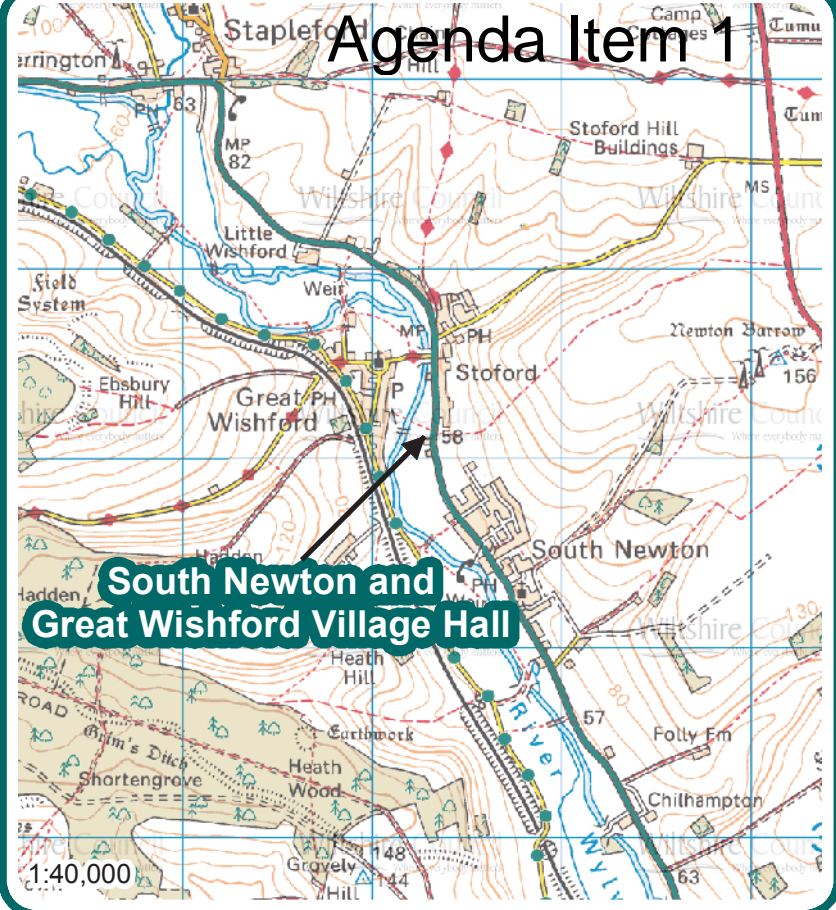
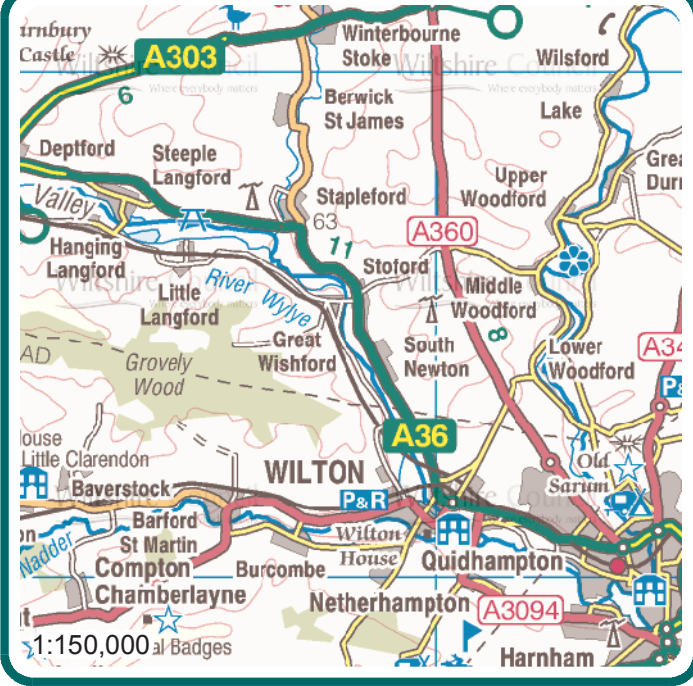
To receive updates from the Town and Parish Council Representatives, and from other partner organisations, including outside bodies on which the Area Board is represented. | 7.10pm |
| 7 | Local Youth Network Update and Youth Activities Grant Applications <i>(Pages 13 - 24)</i>

To receive an update and to consider two Youth Funding requests as detailed below and in the attached papers. <ul style="list-style-type: none">• The Bridging Project - £3,290• Shrewton Youth Club - £4,480 | 7.25pm |
| 8 | Cyber Crime

Police Sergeant Paul Harvey will talk on the topic of scams and advise the community how best to protect themselves from the risks of Cyber Crime. | 7.35pm |
| 9 | Highways Proposals <i>(Pages 25 - 58)</i>

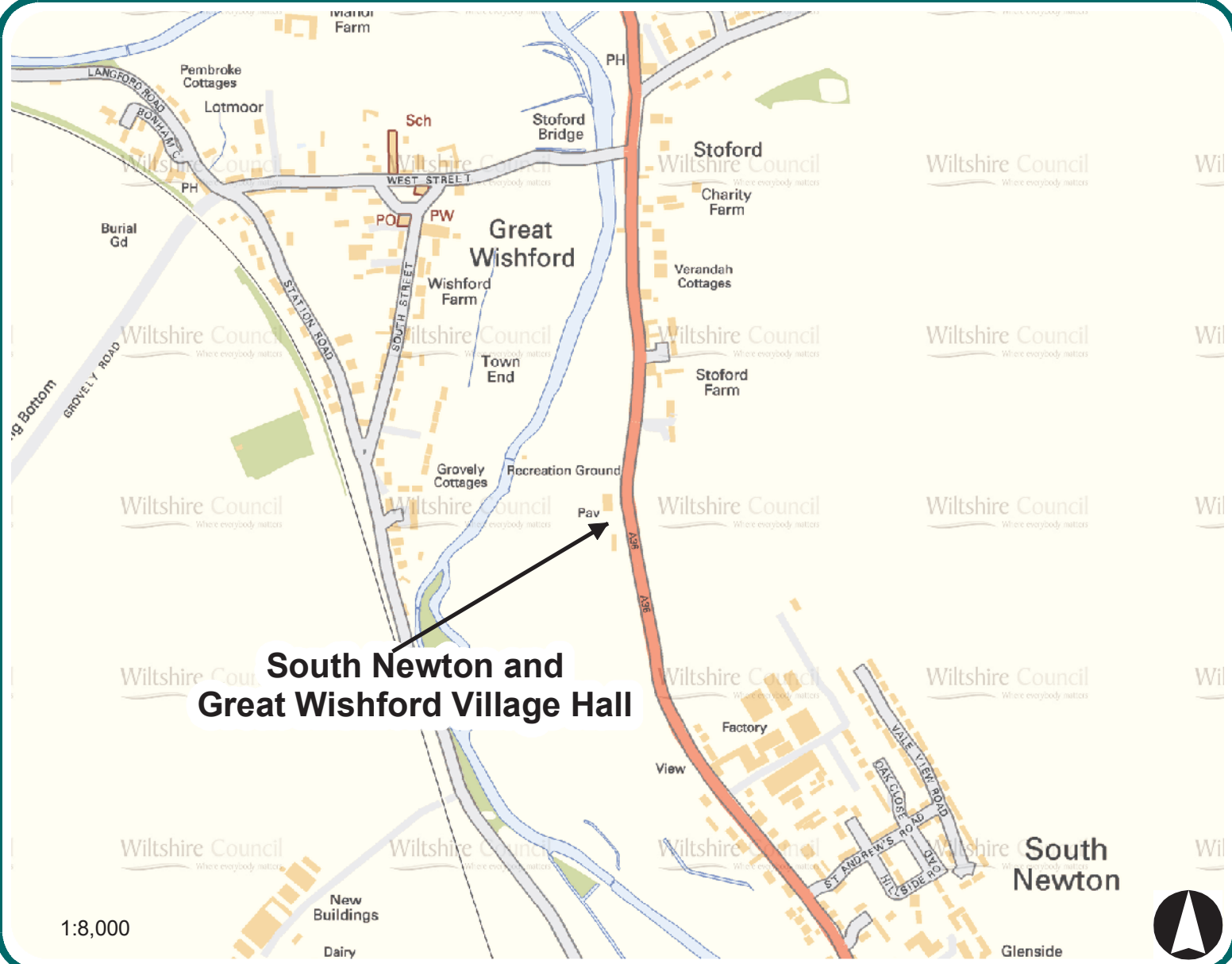
To consider the list of proposed works for 2017/18, as detailed in the attached report. | 7.50pm |

- | | | |
|----|---|----------------|
| 10 | <p>Joint Strategic Assessment (JSA) Event (<i>Pages 59 - 76</i>)</p> <p>To receive an update on the outcome of the 'Our Community Matters' Joint Strategic Assessment event held on 26 January 2017, and to ask the Area Board to endorse the outcomes.</p> | 8.00pm |
| 11 | <p>Update from the Community Area Transport Group (CATG) (<i>Pages 77 - 84</i>)</p> <p>To consider an update and recommendations from the Community Area Transport Group (CATG) in relation to the funding available towards Local Transport Projects.</p> <p>The Minutes of the latest CATG meeting are attached for information.</p> | 8.10 pm |
| 12 | <p>Community Area Grants - an Overview</p> <p>The Community Engagement Manager will give an overview of funding awarded by the Board over the last year.</p> | 8.20pm |
| 13 | <p>Health & Wellbeing Group (<i>Pages 85 - 86</i>)</p> <ol style="list-style-type: none"> 1. To receive an annual report/ presentation from Farleys Malone 2. To receive an update from the H&WBG | 8.35pm |
| 14 | <p>Urgent items</p> <p>Any other items of business which the Chairman agrees to consider as a matter of urgency.</p> | 8.55pm |
| 15 | <p>Future Meeting Dates and Close</p> <p>The next meeting of the Amesbury Area Board will be held on 25 May in Durrington.</p> | 9.00pm |



South Newton and Great Wishford Village Hall

South Newton and Great Wishford Village Hall
South Newton
Salisbury
SP2 0PJ



South Newton and Great Wishford Village Hall

I will email

MINUTES

Meeting: AMESBURY AREA BOARD
Place: The Redworth Centre, Amesbury Leisure Centre, Antrobus Rd,
Amesbury, Salisbury SP4 7ND
Date: 16 January 2017
Start Time: 12.00 pm
Finish Time: 12.40 pm

Please direct any enquiries on these minutes to:

Jessica Croman Democratic Services Officer, Tel: 01225 718262 or (e-mail) jessica.croman@wiltshire.gov.uk

Papers available on the Council's website at www.wiltshire.gov.uk

In Attendance:

Wiltshire Councillors

Cllr Ian West (Chairman), Cllr Graham Wright (Vice Chairman), Cllr Mike Hewitt,
Cllr John Smale and Cllr Fred Westmoreland

Wiltshire Council Officers

Jessica Croman (Democratic Services Officer)
Dave Roberts (Community Engagement Manager)
Andy Cole (Highways Engineer)

Town and Parish Councils

Amesbury Town Council (Ian Mitchell, Richard Allen, Paddy Allen)
Durrington Town Council (Marion Wardell, Richard Deakios)
Bulford Parish Council (Jackie Clark)
Shrewton Parish Council (Darren Henry, Richard Harris)
Steeple Langford Parish Council (Sue Jiggins, Richard Coward)

Total in attendance: 22

<u>Agenda Item No.</u>	<u>Summary of Issues Discussed and Decision</u>
1	<p><u>Welcome and Introductions</u></p> <p>The Chairman welcomed everyone to the meeting of the Amesbury Area Board and thanked The Redworth Centre for hosting the meeting.</p> <p>At the Chairman's invitation, the Councillors introduced themselves.</p>
2	<p><u>Apologies for Absence</u></p> <p>Apologies for absence had been received from:</p> <ul style="list-style-type: none"> • Cllr Jamie Capp
3	<p><u>Minutes</u></p> <p><u>Decision</u> The minutes of the meeting held on 17 November 2016 were agreed as a correct record and signed by the Chairman.</p>
4	<p><u>Declarations of Interest</u></p> <p>There were no declarations of interest.</p>
5	<p><u>Chairman's Announcements</u></p> <p>The Chairman referred to the announcement contained within the agenda pack.</p> <p>The Chairman congratulated Amesbury for their Christmas lights and Christmas tree over the festive period noting how nice it was for the community.</p> <p>The Chairman explained that the highways proposals due at the meeting had been delayed and it was agreed that a letter of disappointment would be sent from the Area Board to the Highways department at Wiltshire Council.</p>
6	<p><u>Police and Crime Commissioners Precept Consultation</u></p> <p>Due to technical difficulties the precept consultation video was unable to be shown, although those present were informed that a link to the consultation video was included in the agenda which could be accessed on the Wiltshire Council website or on youtube. Further information on how to respond to the precept consultation was included in the agenda. The Community Engagement Manager explained that he would email all of the Parish and Town Councils a link to the consultation.</p>

Community Area Grants

At the Chairman's invitation, Councillor Fred Westmoreland, Lead member for Grants, introduced each grant.

It was noted that a Members initiative was granted under delegated authority for the provision of yellow hatchings on the Countess Roundabout on the south east section for £2,743. This was subject to both Amesbury and Durrington Town Councils agreeing to contribute to the initiative.

Decision

Amesbury Town Council was awarded £575.99 towards replacement road name signage.

Reason - *The application met the Community Area Grants Criteria 2016/17.*

Decision

Brambles pre-school was awarded £1,000.00 towards an outdoor Sensory Project

Reason - *The application met the Community Area Grants Criteria 2016/17.*

Decision

Amesbury & Boscombe Down Link Scheme was awarded £5,000.00 towards Amesbury Link new transport.

Reason - *The application met the Community Area Grants Criteria 2016/17.*

Decision

Bulford Parish Council was awarded £1971.30 towards refurbishment of the whole village Hall

Reason - *The application met the Community Area Grants Criteria 2016/17.*

Decision

Bulford Parish Council was awarded £1092.00 towards simple SIDS for the community speed scheme.

Reason - *The application met the Community Area Grants Criteria 2016/17.*

Decision

Idmiston Parish Memorial Hall was awarded £981.90 towards the Idmiston Parish Memorial Hall short mat bowls club.

Reason - *The application met the Community Area Grants Criteria 2016/17.*

	<p><u>Decision</u> Shrewton Cricket Club was awarded £5,000.00 towards grounds Maintenance Equipment. <i>Reason - The application met the Community Area Grants Criteria 2016/17.</i></p> <p><u>Decision</u> Christ the King RC Primary School, Amesbury was awarded £3,500.00 towards William Brannon Memorial Sensory Garden. <i>Reason - The application met the Community Area Grants Criteria 2016/17.</i></p> <p><u>Decision</u> Shrewton Methodist Church was awarded £900.00 towards a ceiling Replacement. <i>Reason - The application met the Community Area Grants Criteria 2016/17.</i></p>
8	<p><u>Urgent items</u></p> <p>A question was asked about the availability of award schemes at Wiltshire Council for Wiltshire residents.</p> <p>It was noted that Wiltshire Council did have a variety of award schemes, which the CEM would find out more information about. The CEM explained that the local Town or Parish could also introduce a local award scheme and that other Area Boards offered themed awards which could be something that the Amesbury Area Board introduced.</p>
9	<p><u>Future Meeting Dates, Evaluation and Close</u></p> <p>It was noted that the next meeting of the Amesbury Area Board would be held on 2 March, 7pm at the South Newton & Great Wishford Village Hall, Warminster Road, Stoford, Salisbury SP2 0QW.</p> <p>The Chairman thanked everyone for attending.</p>

Amesbury Area Board

March 2017

1. East Community Policing Team

Sector Head:	Inspector Nick Mawson
Sector Deputy:	Sergeant Mark Andrews
Community Coordinator:	PC Lucy Wileman
Amesbury PCSO:	Pcso Levi Morphy
Amesbury Rural PCSO :	Pcso Shona Maycock
Durrington/Bulford/Larkhill & Figcheldean:	Pcso Will Todd

Hello and welcome to this Community Policing report.

The New Year is well underway and over the coming months and into the future, Wiltshire Police will be continuing to develop its workforce model. The policing landscape that we face is ever more complex and challenging and within that is the reality of financial pressures that continue to present difficulties. With this in mind Wiltshire Police is committed to effective and efficient policing through making sure we have the right people with the right training in the right place. We have reinforced our efforts to embrace diversity, give everybody the opportunity to succeed and be inclusive in all we do. Ultimately, we do this to ensure that you are provided with the service that you expect.

Many of you may know that the Police and Crime Commissioner's Police and Crime Plan has been out for consultation. When finalised, it will set Wiltshire Police clear priorities and highlight opportunities for us to work to improve our service.

Over February Wiltshire Police will be involved in a number of campaigns revolving around vulnerability as well as youth engagement and will participate in three national campaigns:

- 6-12 February: Sexual Abuse and Sexual Violence Awareness Week
- 7 February: Safer Internet Day
- 27 February: Student Volunteering Week (which will give us an opportunity to promote our successful Police Cadet scheme)

Additionally Wiltshire Police will be attending the Wiltshire Youth Summit, which will take place at Devizes School. We are also delighted to be welcoming police colleagues from across the South West region as it hosts a regional conference for the Black Police Association in February.

As always we are grateful your feedback; Wiltshire Police is here to serve you and we always like to hear what we have done well or where you think we could improve.

Our free Community Messaging service will also help keep you updated about policing and crime in your local area <https://www.wiltsmessaging.co.uk/>

2. CPTs - Current Priorities & Consultation Opportunities:

There are four priorities for the Amesbury Area.

Priority 1

Theft from Motor Vehicles.

There is an ongoing series involving theft from Motor Vehicles. This priority was not agreed at the recent NTG meeting on 5th January 2017. However the CPT have introduced this on 20th January due to the crimes being reported. A lot of media work took place the week beginning 23rd January, the purpose of this was to inform the Community about the crimes and offer crime prevention advice to try and deter further reports. A lot of back office work is underway to work out who is responsible and come up with other methods to reduce these crimes, such as the application to area board for signage at relevant beauty spots that have been highlighted as target areas. 24 actions have taken place by the team since this priority started.

Priority 2

Drugs

The NTG group agreed on 5th January for this priority to role over as intelligence was still coming in and such information would go towards applications to the court for warrants when applicable. Thankfully reports around drug taking at the local skate park have now stopped.

Priority 3

Hare Coursing

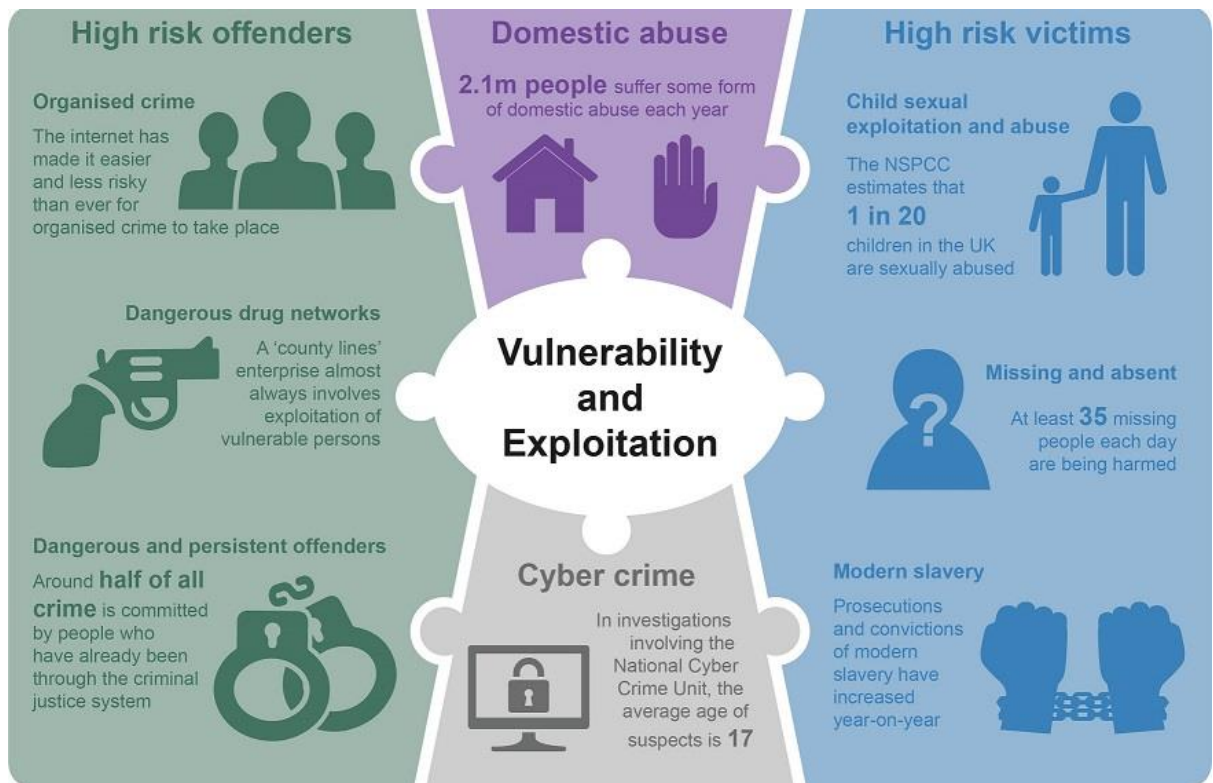
Since the start of this priority on 20th October the CPT have carried out 142 actions for this priority. Last week the direction for officers was to carry out particular attention to Stonehenge, Berwick St James, Everleigh, Tilshead & Winterbourne Stoke to provide a visible presence. Officers will deal appropriately with any offences and gather intelligence.

Priority 4

ASB

New priority was agreed at the NTG in January following complaints of Anti Social Behaviour around the Pavillion, Durrington. 30 ASB surveys have been given out to residents around the Recreation Ground, we are awaiting their return. 22 actions by the team so far.

3. Wiltshire Police Control strategy



Cybercrime

There have been no reported instances of cybercrime since the last meeting.

Domestic Abuse

Amesbury CPT continue to be involved in pro-active engagement. There has been 49 reported incidents of Domestic Violence in the Amesbury Area between 1st November – 31st January.

High Risk Offenders

The CPT continue to work closely with the Public Protection Department to identify persistent or dangerous offenders, to engage with them and to take positive action where required. One offender has been released and daily checks will be carried out with this individual to ensure he is abiding to his conditions.

Local crimes

Amesbury- 01/11/2016 – 31/01/2017 139 Crimes recorded

Anti Social behaviour still remains at an all time low. It is believed that this has a lot to do with youth provision in Amesbury such as the Youth Café which is still going really well.

There were 7 reported Dwelling/Non Dwelling Burglaries, local media work took place in January offering residents crime prevention advice.

3 drug operations took place, all persons involved are still on bail.

New Years Eve was successfully Policed with proactive patrols taking place across the sector. There were no reported incidents in the Town Centre.

Amesbury Rural - 01/11/2016-31/01/2017 88 Crimes recorded

There were 8 reported Non Dwelling Burglaries. Sheds & Barns were broken into and garden tools removed.

2 drug incidents, one person still remains on bail.

Unfortunately there were 28 reports of Criminal Damage, not all of these are the incidents involving a possible catapult. At this time 4 people are on bail following an arrest on 04/02/2017. Work on this series continues.

Durrington/Bulford/Larkhill & Figcheldean – 01/11/2016-31/01/2017 76 Crimes recorded.

There were 7 reported Dwelling/Non Dwelling Burglaries, these included sheds, barns, a home and a garage break.

1 drug incident , adult male was issued with a fixed penalty notice for possession of cannabis.

12 reports of Criminal Damage. One male arrested for the Arson Series and is currently on remand. Vehicles at Woodhenge have been targeted, people are reminded not to leave valuables in their cars.

Your local PCSO's have started their community consultations at Tesco's Amesbury & Sullys Café. Further dates will be published shortly.

Nick Mawson
Sector Inspector,
Wiltshire East CPT



Area Board Update - February 2017

Healthwatch Wiltshire is a local independent organisation which exists to speak up for people on health and care. If you have used a service recently then we would like to hear from you. We use what people tell us when we meet with the commissioners and providers of services to make sure that they take account of your views and experiences.

S.A.I.L.

The Your Care Your Support Wiltshire (YCYSW) website team are adding forms to help people do some of the business of social care online. Recently we added a

S.A.I.L (Safe and Independent Living) form. S.A.I.L is a partnership between Dorset & Wiltshire Fire & Rescue Service and Wiltshire Council to offer anyone an assessment promoting safe and independent living in your own home. A Dorset & Wiltshire Fire & Rescue Service representative can offer a Fire Safety risk assessment, safety advice, advice on night-time routines, making an escape plan, checking smoke alarms, and signpost to benefits advice and debt advice. To request a visit, you can log in to Your Care Your Support, and with an activated account, complete the SAIL request form online: www.yourcareyoursupportwiltshire.org.uk/care-and-support/safe-and-independent-living.aspx.



The Pressure on Beds

The national media has been full of stories about pressures on the NHS. In Wiltshire, hospitals and the NHS Wiltshire Clinical Commissioning Group have been urging people to only go to Emergency Departments if necessary. You are asked to consider other services, such as your GP, minor injury units or your pharmacist to ask if they can treat your condition.

We have been hearing peoples' experiences of being discharged from hospital to other care settings around the county. We heard that, for most people, the system is working well with 71% of people saying they were 'very satisfied' or 'satisfied' with their discharge. However, we have also heard of problems from people who didn't feel informed or included in decisions about their care, and difficulties arranging care at home for people who need it. Problems with transport to get home, and knowing who is responsible for care after discharge were also issues for some of the people we spoke to. Our full report has been published at www.healthwatchwiltshire.co.uk/wp-content/uploads/2017/01/Transfers-of-Care.pdf. We have fed this information back to the people who run the services, so they know where the system is and is not working well.

Contact us:

Tel 01225 434218

info@healthwatchwiltshire.co.uk

www.healthwatchwiltshire.co.uk



Report to	Amesbury
Date of Meeting	02/03/2017
Title of Report	Community Youth Grants

1. Purpose of the report:

To ask Councillors to consider the following applications seeking funding from the Amesbury Area Board.

Application	Grant Amount	Total cost of project
Applicant: BRIDGING PROJECT Project Title: Bridging Project	£3,290.00	£4,290.00
Applicant: Shrewton Youth Club Project Title: Shrewton Youth Club 2017	£4,480.00	£6,100.00

2. Main Considerations

Councillors will need to be satisfied that grants awarded in the 2014/15 year are made to projects that can realistically proceed within a year of the award being made.

Area Boards have authority to approve Area Grants under powers delegated to them by the Cabinet member for Communities, Campuses, Area Boards, Leisure, Libraries and Flooding. Under the Scheme of Delegation Area Boards must adhere to the Area Board Grants Guidance 2014/2015.

Community Youth Grants will contribute to the continuance and/or improvement of cultural, social and community activity and wellbeing in the community area, the extent and specifics of which will be dependent upon the individual project.

Community Youth Grants give all local community and voluntary groups, Town and Parish Councils an equal opportunity to receive funding towards community based projects and schemes.

3. The applications

Applicant: BRIDGING PROJECT Project Title: Bridging Project	Amount Requested	Total cost £4,290.00
--	------------------	-------------------------

	from Area Board: £3,290.00	
--	-------------------------------	--

This application meets grant criteria

Project Summary: The Bridging Project is targeted youth sessions for young people aged between 13-25 with disabilities. These projects were run by Wiltshire Council and at the end of Wiltshire Councils Youth Service I sought to continue the running of these sessions. We provide a safe and welcoming environment where young people are encouraged to engage in discussions and activities offering them opportunities of ownership to their youth sessions. We promote and build positive relations between young people and adults.

The Bridging Project is a continued project established by Wiltshire Council which I continued in Durrington at the end of the youth service. As we are now delivering a Community Led Model this group works with this model well. We have a range of people who support and are actively involved in this project such as ex Wiltshire council youth workers Durrington Town Council Local Community Church 2 volunteer parents and young people. We work together with different roles to deliver youth sessions. We advertise other events and services that would benefit the young people and people involved with this project. Young people and their parent/carer have been actively involved in these sessions. We engage with young people about what they want and how we can improve via group discussions planning sessions and the evaluation forms. We provide a safe and welcoming environment with session activities such as arts and crafts fortnightly games night cooking quizzes group work activities and much more. Activities provided are based on what young people tell us they want to do. The Bridging project is targeted youth sessions for young people aged 13 - 25 with a range of disabilities. We are a very small group with a regular number of 3 young people in attendance on a weekly basis. Our other members 5 attend irregular sessions and we have said a fond farewell to 4 of our members as they have now moved on. Due to our low numbers we are currently in discussions about lowering the age group to meet the needs for more young people. As I currently manage another youth session for ages 7 - 11 and have some young people attending those sessions which would benefit from attending this group from aged 11. This would be a good continuation of a youth services for young people with disabilities it works well in the other youth sessions I manage. We have recently welcomed a peer mentor into the group from the Thursday generic youth session I manage. This is currently working well and has brought the group closer together building relationships between new and old members. The sessions are just 50p entry to ensure it's affordable to all. A snack bar is provided with an array of snacks but also kept affordable. Thanks to funding grants we can ensure these prices are kept low. All funds raised are put back into the centre with purchasing resources equipment and replenishing stock which is reflected in the amounts outlined below.

Safeguarding; Safeguarding is of high priority within all work with children

and young people. When we open the doors to welcome young people in we have a responsibility to ensure their safe as are we for them. Which is why all members of staff are DBS checked we are registered on the DBS update service with staff paying an annual fee to ensure ongoing safety and made aware of boundaries policies and procedures and how to deal with any concerns. Staff are required to undertake child protection and safeguarding training. I Rebecca Lock am overall responsible for any safeguarding issues with staff and young people and ensuring all policies and procedures are reviewed annually. I have completed a level 3 in safeguarding and maintain refresher courses to ensure I am knowledgeable in delivering this within my roles and responsibilities. We do not have internet access within the building we deliver youth sessions from. Informal discussions are had with young people to make them aware of the risks and how to stay safe when online.

Monitoring; Every session delivered is evaluated meeting the every child matters outcomes. Outlined on each evaluation sheet it evidences what was delivered any changes required and future plans. Attached to each evaluation sheet is a register which tells us who attended their age and some additional stats recorded in figures only such as Contacts participants of ethnic minority disabled young people males and females. This gives us an overview of the needs we are meeting. I also use the RunAclub site as a tool to monitor progression which is a valuable tool for many aspects of the youth sessions I manage on behalf of young people. This information also enables us to see how well or not so well the sessions are developing. Currently are numbers have become low again through natural progression of young people and we are currently in discussions as to how to increase these as outlined above.

Recommendations from LYN:

Amesbury LYN considered this funding on 08/02/2017 and recommends the funding of £3,290.00 with the condition that if the project does not find alternative premises they return any under spend to the area board.

<p>Applicant: Shrewton Youth Club Project Title: Shrewton Youth Club 2017</p>	<p>Amount Requested from Area Board: £4,480.00</p>	<p>Total cost £6,100.00</p>
--	---	----------------------------------

This application meets grant criteria 2014/15.

Project Summary: The Club requires a grant to support the professional leader and activities over 2017. The young people have been engaged in the process of building the programme and it includes activities that will enable fundraising by them. The programme includes exciting volunteer led work and local professionals retaining a quality of delivery that will be appreciated and enjoyed.

The project continues the local need for Community Youth Support. The Young People assisted in the building of the programme. The anticipated growth of the club will be to approximately 40 however we will invite other nearby clubs and community partners to join with us on some activities growing the beneficiaries. Club fees are low and with the grant will be able to ensure nobody is excluded because of cost. The Youth Leader is supported by a volunteer group and committee as well as volunteer activities leaders. We have no barriers apart from retaining the membership ages of between 11 and 16.

Safeguarding: We have safeguarding policies in place and all staff and volunteers are DBS checked and briefed. The Management Committee is ultimately responsible working through the Youth Leader.

Monitoring: The project is successful when Feedback from the Young People is positive Membership grows Additional Fundraising is achieved

Recommendations from LYN: Amesbury LYN considered this funding on 08/02/2017 and recommend the funding of £4,480.00

Report Author

Dave Roberts Community Engagement Manager

Durrington Youth Provisions

Durrington youth and community centre
The Ham, Durrington, SP4 8HW
durringtonyp@outlook.com



Evaluation of youth provisions provided throughout 2016

Thanks to Wiltshire Council funding, approved by the LYN and Amesbury Area Board and the support received from Durrington Town Council, my team and I have been able to provide youth provisions in Durrington since October 2014 with the continuation of The Bridging Project. In January 2016, we re-opened our doors to 2 additional sessions for young people, providing a range of sessions inclusive to all young people, a new youth service under The Community Led Model.

I have been the driving force in providing youth provisions in Durrington by approaching young people, parents/carers, colleagues, Durrington Town Council, The Community Church, local fundraising charities and The LYN to ensure there was a need and to establish a support network to enable our community to deliver such a service for young people.

Our staffing team is made up of 2 paid experienced/qualified youth workers and 3 volunteers whom offer support on different sessions. We also have a volunteer that provides arts and craft sessions to our Bridging Project on a fortnightly basis.

We have had a successful year having engaged with over 120 young people. We have 97 young people registered with a few outstanding registration forms. As we provide 3 different sessions the attendances are varied.

In addition to our funding we have also been raising our own funds through a small entrance fee and snack bar sales, raising over £1300 which goes back into the centre for resources, replenishment of stock, activities and trips.

The Durrington vehicle show gave us a donation of £100 to provide the youth centre with some console games and a new controller.

The Community Church has been financially contributing towards unexpected heating costs and cleaning costs of the centre.

Durrington Youth Sessions

Our aims and objectives for all youth sessions is provide a safe and welcoming environment where young people can have a sense of belonging. For young people to be empowered, try new skills and make a positive contribution to their youth service and the community.

Youth workers provide young people with information, advice and guidance in an informal educational delivery.

The Bridging Project is a targeted group for young people with disabilities. The Bridging project opened with 7 young people attending from the ages of 13 – 19. Over the year, we had 5 new members and through natural progression we lost 4 members.

We have 8 young people registered. 4 who attend on regular basis and the other 4 who attend irregular sessions.

At the start of the year we had one of our young people attending the LYN meetings to represent views of young people. Due to work and college commitments he is no longer able to attend but enjoyed participating.

More recently we have welcomed a peer mentor into this group from our Thursday sessions. She is giving good support to others and encouraging young people to take part in some activities.

We are aware that our weekly attendees are still quite low regardless of advertising. We are in discussions about lowering the age group to 11 years in the hope to bring in new members. As I manage another youth session for Durrington Town Council; 'Kids Friday Club' for ages 7 – 11, I am aware of a few young people with disabilities whom I believe would benefit from these sessions. In turn this would provide a good continuation of youth provision.



Tuesday is a junior session for year groups 7 – 9. Our original members have now progressed up to our Thursday session. YP attending 'Kids Friday Club' have come up through to these sessions evidencing a good continuation of young people's involvement in the youth services provided in Durrington, a need.

On average, we get 20 young people attending each Tuesday. These figures have fluctuated because the young people we originally had at the start of the year have now moved on to our Thursday sessions. The majority of the young people attending these sessions are new members.



Young people enjoyed 2 visits from Wessex Circus from Jonathan the Jester, with a fire display and the tumble track.

Thursday is for young people in years 10 – age 19. We provide the two separate sessions for the different year groups because it works well. Younger young people can be intimidated by some older young people. By providing the two sessions we can tackle different issues, some issues needing to be raised may not be suitable for our younger members.

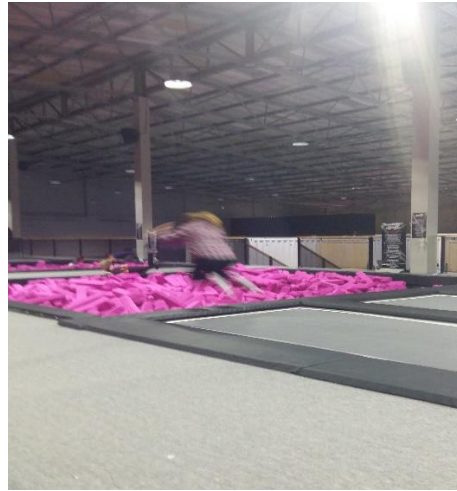
On average, we have 40 young people in attendance for these sessions.

Through building positive relationships with the young people that have come up from the Tuesday sessions to the Thursdays we have got them involved with the LYN meetings making a valued contribution and providing the LYN with a good future connection to their school council. Our LYN member recently attended and engaged in the JSA event.

From these sessions, we also have 2 Peer mentors. One whom I have previously mentioned who is supporting young people in 'The Bridging Project' and the other is provide support and guidance in the 'Kids Friday Club'. This has evidenced a full circle of attendees to peer mentoring throughout all youth sessions provided in Durrington.

We have recently joined up with Shrewton youth club to provide our young people with a trip to 'Freedog' a trampoline centre. This was a huge success and great to work in partnership with another group. We aim to provide more of this for the future.

I volunteer and am a committee member for the 'Bluez Discos' held in Durrington. Through advertising these events we have many our members from the Tuesday and Thursdays sessions attend the discos.



Young people taking part and having fun during a session activity and our 'Freedog' trip.

What we have delivered throughout all youth sessions in accordance with the 'Every Child Matters' outcomes

All sessions provided are evaluated, evidencing what the outcomes were in accordance with the Every Child Matters framework. Evaluation is a key part of what we do. It enables the staff team to reflect on a session to establish if we could have done something better or what else can be delivered based on what Young People have discussed or requested. Outlined below is a little of what's been happening within our sessions and the issues we have discussed and supported our young people with.

Be Healthy;

- We have tackled a range of health issues from dietary to physical and mental health and wellbeing.
- Young people initiated a sexual health project with clay which was informative and very educational. As I am 'No Worries' trained I provided a session with information and demonstrations so young people can stay healthy and safe.
- During the year, we have given information, advice and guidance to young people living with mental health issues, the loss of a parent and exam pressures plus much more.
- Young people have engaged in quizzes about the effects of smoking, alcohol and drugs.

Stay Safe;

- We have unfortunately had a couple of arguments break out and near fights between young people but with staff support young people have been enabled to safely air their grievances preventing the issues from escalating.
- Through quizzes and games, we tackle a range of issues such as; drugs and alcohol misuse, sex and relationships, mental health, online safety and much more. Through building positive relationships, the young people open up about a range of issues which we tackle in a fun way to support them in coping with whatever their issue may be.
- We promote general safety practices throughout the centre and for when young people are not in our care but out on the streets either on bikes or to being alone in the evenings. Young people have listened to general safety rules when providing activities.
- Young people are made fully aware of our zero tolerance to any form of bullying or discrimination and will be asked to leave if it is demonstrated in any way. All young people are made welcome and free to be who they are when they are welcomed into our sessions.



Young people listening to the safety expectation of 'Freedog'

Enjoy and Achieve;

- Young people participate in activities provided within the sessions, demonstrating communication, negotiation and sharing skills.
- Young people took part in our outing to 'Freedog' alongside Shrewton youth club.
- Young people engage with others and with staff during a session with lots of laughing and discussions had.

Make a Positive Contribution;

- Young people have engaged in the sessions providing ideas and participating in activities, listening to and abiding by the boundaries of the centre.
- Young people have become involved in the 'LYN' offering young people's views to help with providing positive activities to others.
- Young people are peer mentoring others in different sessions provided in Durrington.
- Young person participated in a 'Splash' event held at the centre.

Achieve Economic Well – Being;

- Young people help with the running of the snack bar.

- We have provided information, advice and guidance to young people going through exams, moving up to college and moving out of home.
- Young people discuss with us issues they are having with teachers and the problems they face at school and the pressures of general teenage life.

Our future aspirations

To continue to provide youth services within Durrington whilst there is a need. To continue to find funding sources to finance the youth provision being provided. To have secured premises to deliver youth work from.

We are currently leasing 'The Ham Centre' from Wiltshire Council.

Avon Valley College has approached Wiltshire Council for the use of the land to where the building is situated for their own development of the school site.

Wiltshire Council has extended our lease of The Ham Centre until September 2017. In partnership with Durrington Town Council we are seeking to find alternative premises. We have viewed a possible 2 buildings at Avon Valley College and are in discussions with the Academy about leasing one of them after September 2017.

Shrewton Youth Club - an evaluation for the Local Youth Network (LYN) - January 2017.

Shrewton Youth Club is an active club that has been running for a year. This was possible because of the initial financial support from the LYN, a grant which enabled the employment of a Youth Leader, some hall rent and other initial items. Aside from the financial support, the Club has been successful owing to the involvement of a small number of adult helpers and committee members.

In that time, 39 sessions have been recorded on the run-a-club monitoring session. This has included 30 members and others that have dipped in and out of sessions. Regular attendance each week is 15.

The activities provided have all got educational outcomes included. It is the ethos of the group to not only provide the traditional youth activities such as pool, table tennis and consoles but also the opportunity to learn something new.

The sessions organized and led by our youth leader have included quiz nights, cooking and craft. Outside speakers have also visited to provide sessions; the police on safety, a local guitar player giving a musical history, local artists teaching portrait drawing, sculpture and pottery and a local fly fisherman giving demonstrations.

The young people are becoming more involved in the group and are currently planning their first fundraiser which will consist of a cake sale alongside displaying their artwork. Four members have also attended the LYN and have expressed interest in attending further meetings.

We have also been lucky to run one trip to Freedog in Swindon. In this venture, we joined Durrington Youth Club to share resources. The young people really enjoyed this which was a great opportunity to share a positive leisure activity. Due to the success of this we are planning on our next trip for February half-term. We are now able to book a minibus and run it ourselves due to our Chairman plus another helper having received MIDAS training.

The plans for this year include a graffiti project, four fundraisers, two trips, organized sports activity and a cooking project.

Our Youth Leader and the Management Committee feel that it is important that we continue to engage with our group offering further diverse learning and positive activities and also attract other young people within the Shrewton community and surrounding area.

Wiltshire Council

Amesbury Area Board

DATE Thursday 2 March 2017

Subject: Area Board Highways Information

Cabinet Member: Councillor Philip Whitehead – Highways and Transport

Key Decision: No

Executive Summary

The local highway network is vital to providing connectivity for businesses and communities, and effective maintenance to ensure its availability is essential to the economic development of the county. Wiltshire Council recognises the importance of maintaining and managing its highway network effectively.

The 'Local Highways Investment Fund 2014 – 2020' is addressing the long standing under investment in highways maintenance, which has been a problem nationally for many years.

The significant investment of £21 million annually for six years by Wiltshire Council has already seen a substantial improvement in the condition of the county's road network, with a 30% reduction in the carriageway maintenance backlog in the first two years of the investment.

Information has been prepared for each Area Board (see **Appendix 1**) showing the schemes completed in recent years, and a summary of road condition information.

An indicative list of priority sites for treatment in 2017/18 has been developed (see **Appendix 2**). The proposals include extensive surface dressing on the A360 between Shrewton and Tilshead.

Proposals

It is recommended that:

- (i) It is noted that good progress has been made on implementing the 'Local Highways Investment Fund 2014 – 2020', and there has been a substantial improvement in road conditions in Wiltshire.

- (ii) The list of proposed are reviewed and any amendments or potential future sites for treatment are forwarded to the Highways Asset Management Team for further investigation.

Reason for Proposals

The highway network forms the Council's largest asset, and it is important that it is maintained in the most cost-effective way in order to show value for money. This includes the use of asset management and whole life costing approaches to inform investment decisions.

Asset management principles have been applied for many years in Wiltshire to ensure appropriate investment with longer term planning. The list of proposed sites for treatment in 2017/18 should further improve the condition of the Council's roads.

Parvis Khansari
Associate Director Highways and Transport

Wiltshire Council

Amesbury Area Board

DATE

Subject: Area Board Highways Information

Cabinet Member: Councillor Philip Whitehead – Highways and Transport

Key Decision: Yes

Purpose of Report

1. To provide an update on progress on the 'Local Highways Investment Fund 2014 – 2020', and to consider future road resurfacing sites.

Relevance to the Council's Business Plan

2. The highways service supports three priorities of the Council's Business Plan:
 - Outcome 2 – People in Wiltshire work together to solve problems locally and participate in decisions that affect them
 - Outcome 3 – People in Wiltshire have a high quality environment
 - Outcome 6 – People are as protected from harm as possible and feel safe

Background

3. The local highway network is vital in providing connectivity for businesses and communities; effective maintenance to ensure its availability is essential to the economic development of the county. Wiltshire Council recognises the importance of maintaining and managing its highway network effectively.
4. The highway network in Wiltshire comprises 4,400 kilometres of road, 3.9 million square metres of footway, 981 bridges and over 50,000 street lights and illuminated signs. The replacement value of the assets is over £5 billion, and it would cost over £330 million to resurface all of the Council's roads.
5. The condition of the county's roads is important to the public. This is demonstrated by the results of the Council's People's Voice and the National Highways and Transportation (NHT) surveys, which indicate low levels of public satisfaction with road conditions nationally.
6. In October 2013 Cabinet agreed to increase highway maintenance funding to £21 million for six years. This was subsequently included in the Council's future budget, and forms the basis of the 'Local Highways Investment Fund 2014 – 2020'. The increased investment in highways maintenance has enabled a large

number of schemes to be progressed to improve the condition of the network and its infrastructure.

7. The Council has applied the principles of asset management to the maintenance of the highway network, which involves taking into account the lifecycle of the assets and monitoring performance of the intervention and investment strategies. The Highways Asset Management Policy and Strategy were reviewed by the Environment Select Committee in October 2015 and subsequently adopted by Cabinet.

Main Considerations for the Council

Local Highways Investment Fund 2014 – 2020

8. The ‘Local Highways Investment Fund 2014 – 2020’ is addressing the long standing under investment in highways maintenance and consequent backlog, which has been a problem nationally for many years. The proposed significant investment of £21 million annually for six years by this Council is delivering substantial improvements in the condition of the highway network in Wiltshire.
9. A range of investment options was initially considered, which ranged from spending the minimum necessary to keep road conditions unchanged to treating the whole of the network. It was intended that the investment should be used to improve approximately 664 kilometres of the network (about 15%), and that annually up to 238 Kilometres of road could be surfaced, depending on the treatment required and the deterioration of the network.
10. In the first two years of the investment there were a number of sites which needed substantial reconstruction work and, as expected, the lengths of road treated were consequently less than the indicative target. In 2016/17 a substantial programme of surface dressing has been undertaken and the total length of road resurfaced has increased considerably.

Year	Length treated (km)
2014/15	148
2015/16	182
2016/17	250

11. A total of 580 kilometres of road has been resurfaced to date, and the Council is currently on target to achieve the anticipated improvement by 2020, subject to funding continuing at current levels. There have also been a significant number of smaller sites treated with hand patching, which has addressed localised areas in poor condition.
12. The detailed calculation of the backlog carried out by the Council’s specialist consultants WDM indicates that there has been a significant reduction in the highways maintenance backlog in the first two years of the investment:

	2013/14	2014/15	2015/16
Calculated backlog	£69.4 million	£63.3 million	£48.2 million

13. The backlog has decreased by 30% since the 'Local Highways Investment Fund 2014 – 2020' started. Good progress has been made in reducing the backlog, but continuing investment, as originally planned, would be required to remove the remaining backlog.
14. A summary of road conditions and other highway information has been prepared for the Area Board (see **Appendix 1**). This information will form the basis of data to be made available on the Council's website, including regularly updated information on potholes and other reports through the My Wiltshire app, the website and by telephone. The website will also be developed to explain the Council's highway maintenance policies and strategies in greater detail.
15. The Council's highways maintenance investment strategy was developed using the Department for Transport funded Highways Maintenance Efficiency Programme (HMEP) toolkit, which identified that timely investment in surface dressing of the minor rural roads would be cost-effective given the current condition of the local road network.
16. The individual sites for treatment were identified from the technical surveys of the road conditions, and were assessed and confirmed by the highway engineers. The lists of proposed sites for treatment have been reviewed by the Area Boards where representatives of the town and parish councils have been given the opportunity to consider local priorities.
17. Surface dressing work was carried out on a number of minor roads across the county last summer. This work sometimes known as 'tar and chippings' is preventative maintenance to seal the road construction and restore skid resistance. It is a cost effective way of extending the useful life of the roads.
18. Not carrying out any maintenance on these minor roads may initially appear attractive in order to save money, but in the longer term that would be a false economy as the repairs would be substantially more expensive if the roads were allowed to deteriorate, and there would be an increasing risk of claims as a result of accidents. The cost of injury compensation claims can be significantly higher than the repair costs, and the cost of doing repairs once a road is in bad condition would be much higher.
19. The overall condition of the road network in Wiltshire is now broadly similar to other authorities in the south west. However, based on the 2015 survey results, which are the latest available nationally, the condition of Wiltshire A roads is the same as the national average, but is below the south-west average. The B and C road conditions in Wiltshire are better than both the national and south west averages, but still not as good as in some of the other authorities in the south west.

20. The condition of the unclassified roads is more difficult to compare as the assessment methods are not necessarily consistent across authorities. In general terms the condition of the more important unclassified roads in Wiltshire compares well with similar authorities, but further assessment will be required to get a better understanding of conditions across the south west.
21. The National Highways and Transportation (NHT) surveys indicate that public satisfaction with road conditions in Wiltshire is below the national average, and for some years has been consistently lower than for similar authorities in the south west. It is anticipated that the effects of the current investment strategy will improve the results of future public satisfaction surveys.

Proposed Surfacing Programme 2017/18

22. Road safety is the top priority, and it is important to treat those sites identified as having reduced skid resistance in accordance with the Council's Skid Resistance Policy. It is necessary to have adequate skid resistance in order to reduce accidents and avoid claims against the Council.
23. There are a number of processes used to improve the road surface:
 - a. Retexturing- the surface is roughened by high pressure steel shot or water to abrade the surface to produce a rougher surface texture. This is cost-effective and avoids the substantially more expensive resurfacing which would otherwise be required.
 - b. Surface dressing – the traditional 'tar and chip' where the road is sprayed with hot bitumen and stone chippings are spread and rolled in. This is a cheap solution to seal the road surface and protect the underlying construction. This process should ideally be repeated every six or seven years.
 - c. Resurfacing – the existing road surface is usually milled off and a new layer of bituminous material is laid. In many cases stone chippings are rolled in to provide additional texture. This is the most durable surfacing but is expensive compared to the other treatments.
24. Careful consideration is given to which treatment to use, taking into account the condition of the existing road surface, volume and type of traffic. In some cases deeper reconstruction is required on sections of road to ensure there is a suitable foundation for the new surface.
25. There are a number of sites which were identified for treatment in previous years which for various reasons it has not yet been possible to complete yet. These have been included in the proposed programme for 2017/18, and will generally be programmed for the start of the programme.
26. There was an extensive programme of surface dressing of rural roads across the county this year. Within the villages and the more built up areas this treatment can be less robust, especially where there are significant vehicle turning

movements, and other surfacing materials can be more effective in these locations. It is intended to carry out surfacing in many of the built up areas adjacent to these recently surface dressed roads.

27. It has been some years since there has been surface dressing on many of the county's minor roads and this is a process which should ideally be repeated every six or seven years. It is proposed to continue the programme of surface dressing in 2017/18, with a large number of sites in the south of the county identified for treatment.
28. A list of priority sites for carriageway resurfacing work has been identified for the Area Board in 2017/18 (see **Appendix 2**). The list of sites will be reviewed and developed in more detail following consideration by the relevant Area Board.
29. The condition of many of the footways in residential areas has been a concern for some years. It has been possible to treat some of these in conjunction with adjacent carriageways when they have been resurfaced, but there are many footways which would benefit from treatment even though the road is in reasonable condition.
30. A survey of the condition of the county's footways is approaching completion and is being used to develop a list of sites for treatment. In view of the amount of footway in need of treatment it is proposed to prioritise the renewal or resurfacing of those areas identified as being in worst condition. The local Highways Engineers are reviewing the sites for treatment, taking into account the survey data.

Safeguarding Implications

31. None.

Public Health Implications

32. The condition of roads and related infrastructure can have serious safety implications. Improving the condition of highways contributes to reducing accidents, especially with regard to improving skid resistance. Roads, bridges, highway structures, signs and street lighting need to be kept in good condition in order to protect the public and those maintaining the assets.
33. The investment through the 'Local Highways Investment Fund 2014 – 2020' is improving the condition of the highway network and safety.

Corporate Procurement Implications

34. There are no procurement implications at this stage.

Equalities Impact of the Proposal

35. The improved maintenance of the highway network, its management using sound asset management principles, and good performance by the highways

contractors, should benefit all road users, including public transport, and vulnerable road users such as cyclists and pedestrians.

Environmental and Climate Change Considerations

36. The effects of climate change could be significant for the highway network as was seen in the flooding of 2014, and the consequent damage to the roads, footways and drainage systems. Having robust maintenance strategies to improve the condition of the network helps build resilience into the infrastructure.
37. Where possible, suitable materials arising from road resurfacing schemes are recycled. Large quantities of road planings are used to repair damage on rights of way and on county farms, or provided to community groups. The presence of tar bound materials in older carriageways has caused problems on some sites as it has to be disposed of as contaminated waste, with consequent cost implications. Options for in-situ and other recycling processes are being examined in order to increase the recycling of highway materials.

Risk Assessment

38. The application of good asset management principles, including the planned maintenance of the highway infrastructure and the establishment of formalised asset management policies, helps reduce the risk of incidents and claims.

Risks that may arise if the proposed decision and related work is not taken

39. There is a risk of increased accidents, claims and public dissatisfaction if the programme of highway maintenance is not delivered or delayed. The principles of asset management have been followed by this Council for many years, but as future DfT funding will be dependent on demonstrating the application of good practise and asset management principles. Failure to do so will result in reduced funding in future years.

Risks that may arise if the proposed decision is taken and actions that will be taken to manage these risks

40. It is important to ensure that highways asset management and service delivery are implemented effectively. Processes are currently in place with Service Delivery Teams established. These include representatives from the Council, consultants and contractors involved in delivering the services, and report to the Contract Management Meeting comprising senior managers from those organisations.

Financial Implications

41. The highway network and related infrastructure forms the Council's largest asset, and has a replacement value of over £5 billion. It is important that they are maintained in the most cost-effective way in order to achieve value for money. This includes the use of a whole life costing approach to inform investment decisions.

42. The increasing drive for asset management from DfT will mean that failure to demonstrate the application of this approach will result in reduced funding from central government. An increasing proportion of available funding will be potentially withheld as an incentive. By 2020/21 Wiltshire could lose out on £2,782,000 of DfT funding if good asset management is not followed.
43. The financial pressures on the Council are well understood, and it may be necessary to reduce investment in the future. This would reduce the scope for consultation with the Area Boards as resurfacing work would need to be concentrated on those sites with serious safety defects.

Legal Implications

44. The Council has a duty under the Highways Act to maintain the county's roads. The highway inspection procedures, policies and improvement plans ensure that this duty is fulfilled. The increased investment and improved road conditions is helping the Council meet its responsibilities with regard to road maintenance.

Options Considered

45. There is a need to continue to apply asset management principles to the highway network and to ensure the performance of the contractors involved in delivering the service is good in order to keep the network in good condition and to ensure value for money.

Conclusions

46. The highway network forms the Council's largest asset, and it is important that it is maintained in the most cost-effective way in order to show value for money. This includes the use of whole life costing approaches to inform investment decisions.
47. The 'Local Highways Investment Fund 2014 – 2020' has provided the opportunity to address the long standing under investment in highways maintenance, which has been a problem nationally for many years. The significant investment of £21 million annually by Wiltshire Council is seeing a substantial improvement in the condition of the highways network.
48. Good progress has been made in delivering the programme of highway maintenance and has included the involvement of the Area Boards to help set local priorities. It is intended that this process should continue in future years.

Parvis Khansari
Associate Director Highways and Transport

Report Author:
Peter Binley
Head of Highways Asset Management and Commissioning
January 2017

The following unpublished documents have been relied on in the preparation of this report:

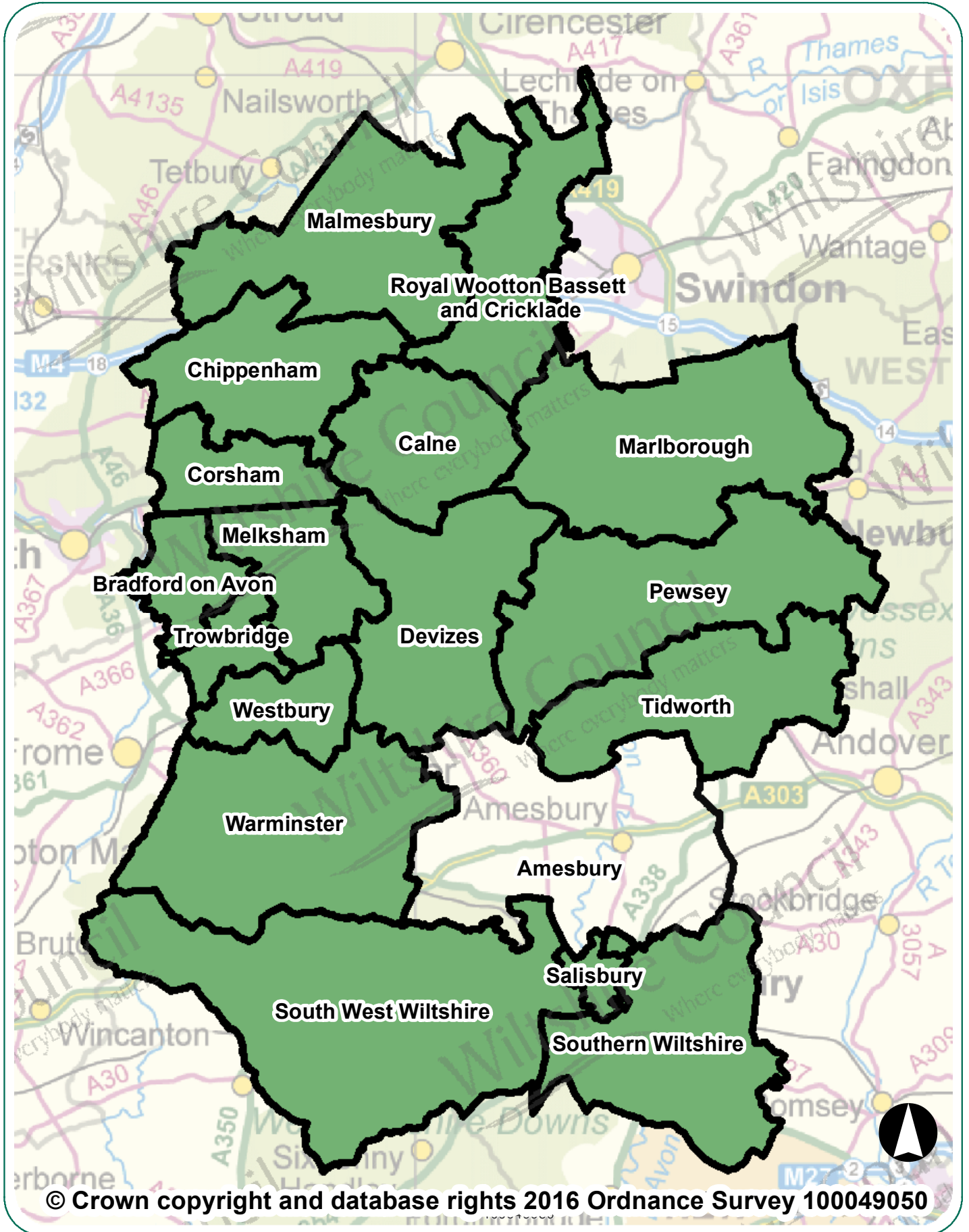
None

Appendices

Appendix 1 – Local Highways Information

Appendix 2 – Proposed priority surfacing sites for 2017/18

Amesbury Area Board Highway Information



© Crown copyright and database rights 2016 Ordnance Survey 100049050

Amesbury Area Board Highway Information

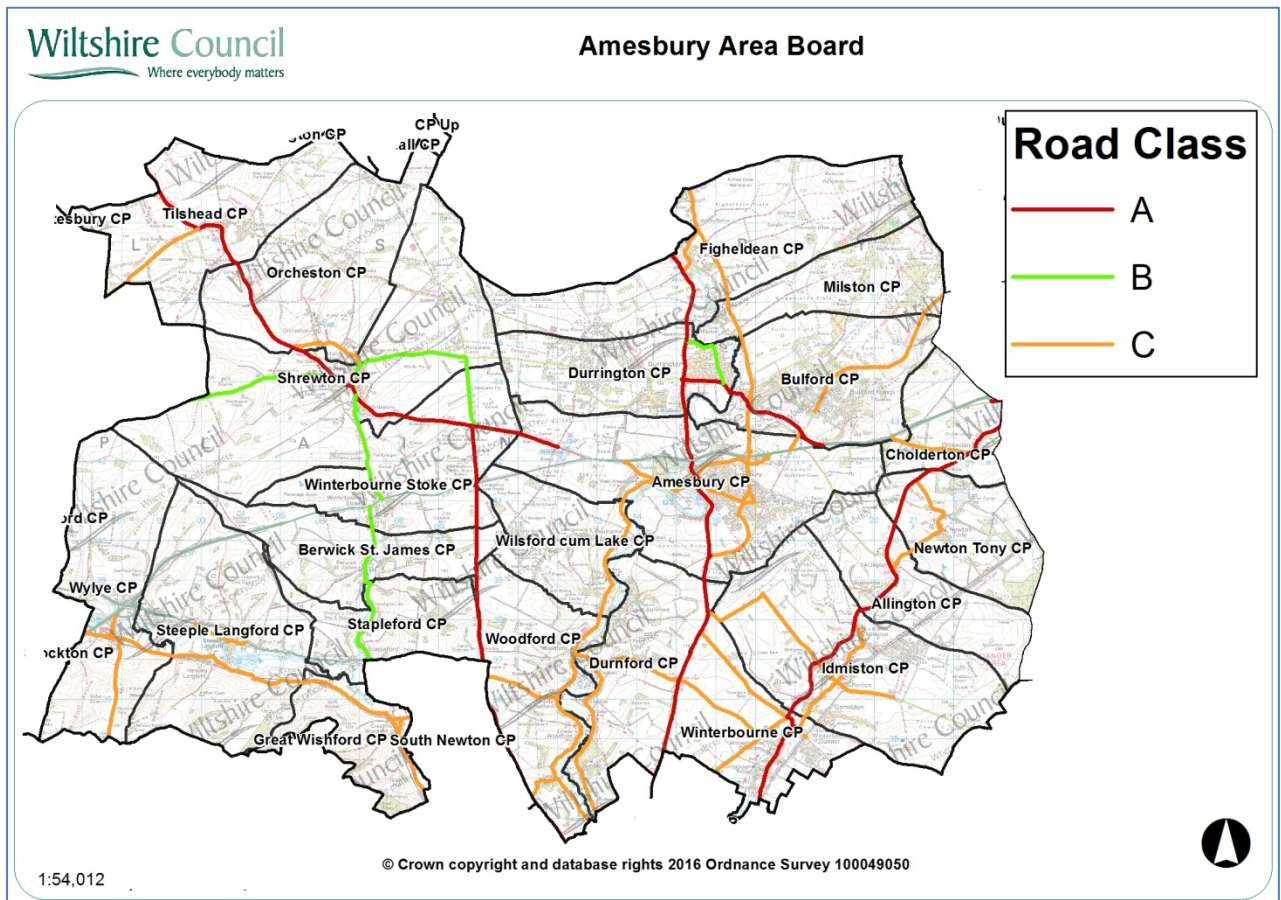
Introduction

This document summarises highway information for your area board. It lists the recent highway and related work carried out by Wiltshire Council, including the road resurfacing carried out during the first two years of the 'Local Highways Investment Fund 2014 – 2020', and includes other information which should be of interest.

Further information on the Council's activities is available at the website www.wiltshire.gov.uk. If you wish to report a specific highway issue please use My Wiltshire. Details are provided at the end of this document.

Parishes in the community area are:

Amesbury, Wilsford cum Lake, Woodford, Durnford, Tilshead, Orcheston, Shrewton, Cholderton, Winterbourne, Idmiston, Allington, Berwick St James, Newton Tony, Figheidean, Milston, Durrington, Bulford, Great Wishford, Stapleford, Steeple Langford, Winterbourne Stoke, Wylie



Network statistics in your area

Road length by class

Road type	Urban (km)	Rural (km)
A Class Roads	14.63	40.37
B Class Roads	5.98	12.87
C Class Roads	31.85	60.18
Unclassified Roads	65.98	35.85
Total	118.44	149.27
	Overall Total	267.7

The council categorises its roads to reflect their importance. This enables an effective assignment of highway inspection frequencies and maintenance standards.

Highway assets in your area

The council keeps an inventory of its highway assets in order to assist planning its highway maintenance. Important statistics relating to your board area are:

Asset Type	Measure
Carriageway	267.7 km
Footways adjacent to road	117 km
Footways (linked)	9.6 km
White road centre lines	154 km
Road kerbs	158 km
Grass verge (maintained)	406 km
Drainage grips	1785
Drainage pipe grips	119
Drainage gullies	4342
Road signs	2554
Street lights	3176

Major highway maintenance

Road resurfacing

Wiltshire has over 3,000 miles of road. The Council's 'Local Highways Investment Fund 2014 – 2020' is making a massive investment to improve the condition of the roads in Wiltshire over six years. The programme of work started in April 2014, and is designed and supervised by the Council's consultants Atkins, with the work carried out by our main highway contractors Tarmac and Eurovia.

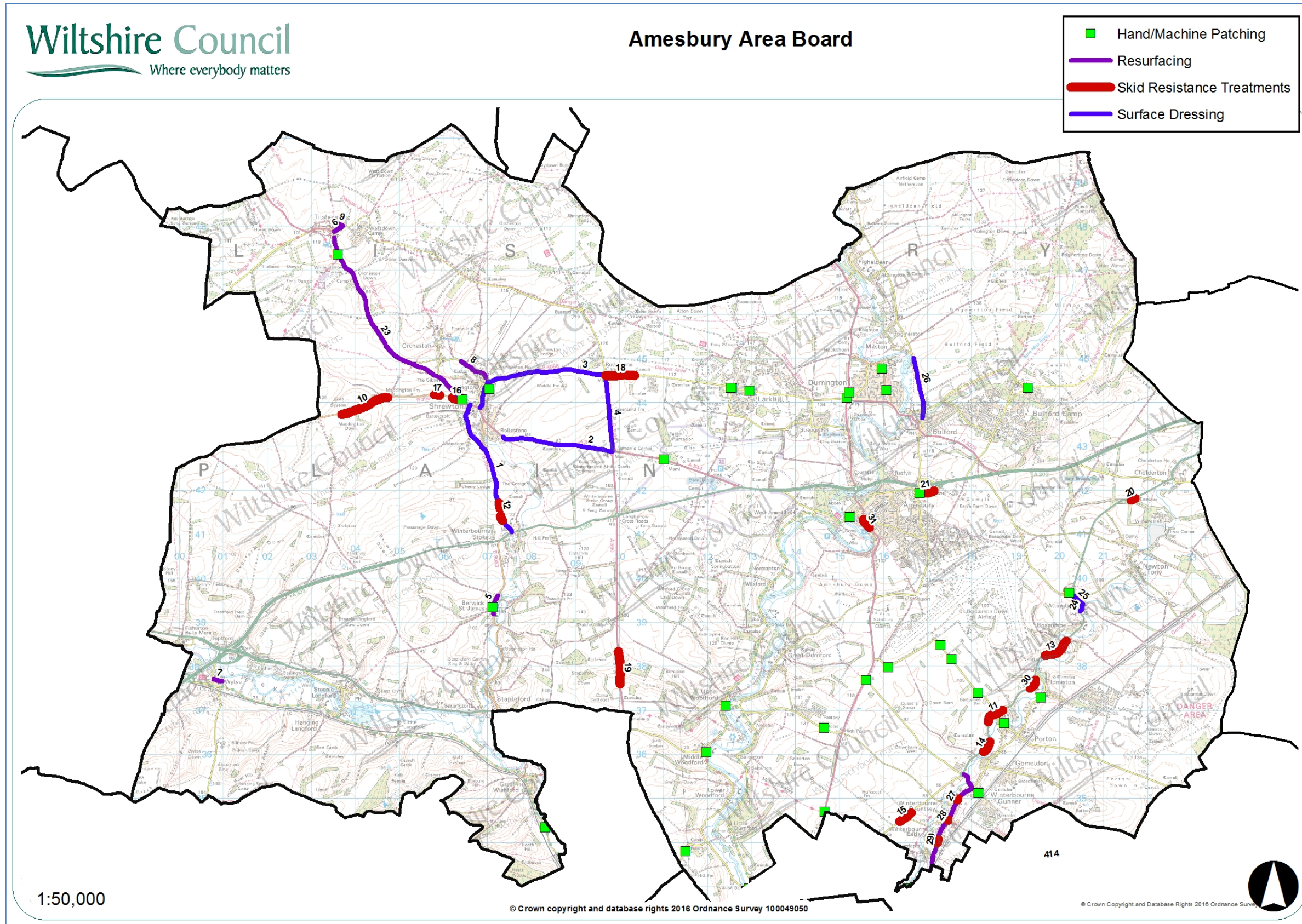
The work carried out in the first two years of the programme has improved a considerable number of the roads in previously poor condition. The locations of sites treated in recent years are shown below.

Carriageway repairs

As well as resurfacing roads other works are undertaken to make localised repairs to keep the roads safe. The works undertaken in your area since 2014 are shown on the map below.

The wet winter and flooding in previous years has resulted in substantial damage to the road network. It is important that serious defects are treated promptly to keep the roads safe. The Council currently operates four Pothole teams that respond to urgent issues to keep the roads safe.

Plan showing major maintenance schemes & hand/machine patching sites completed since 2014



Major maintenance completed since 2014

No	Location	Works
1	B3083 north junction A303 into The Common to junction with Maddington Street	Surface Dressing
2	Amesbury Road Shrewton east to Airmans Corner	Surface Dressing
3	London Road into The Packway to Rolleston Crossroads	Surface Dressing
4	B3086 Airmans Corner north to The Packway	Surface Dressing
5	High Street, Berwick St James	Resurfacing
6	Candown Road, Tilshead	Resurfacing
7	Church Street, Wylde	Resurfacing
8	Elston Lane, Maddington	Resurfacing
9	Imber Place	Resurfacing
10	Track Chitterne Down To Maddington Farm	Skid Resistance Improvements
11	Tidworth Road, Idmiston	Skid Resistance Improvements
12	A303 Winterbourne Stoke To Cherry Lodge	Skid Resistance Improvements
13	Tidworth Road, Allington	Skid Resistance Improvements
14	A338 at West Gomeldon	Skid Resistance Improvements
15	Portway, Winterbourne Dauntsey	Skid Resistance Improvements
16	B390 Chitterne Road, Shrewton	Skid Resistance Improvements
17	B390 Chitterne Road, Shrewton	Skid Resistance Improvements
18	The Packway, Larkhill	Skid Resistance Improvements
19	North of Stoford Bush Crossroads, Woodford	Skid Resistance Improvements
20	Unclassified road – Crossroad Amesbury Road to 30mph Cholderton	Skid Resistance Improvements
21	Imber Place	Skid Resistance Improvements

Amesbury Area Board Highway Information

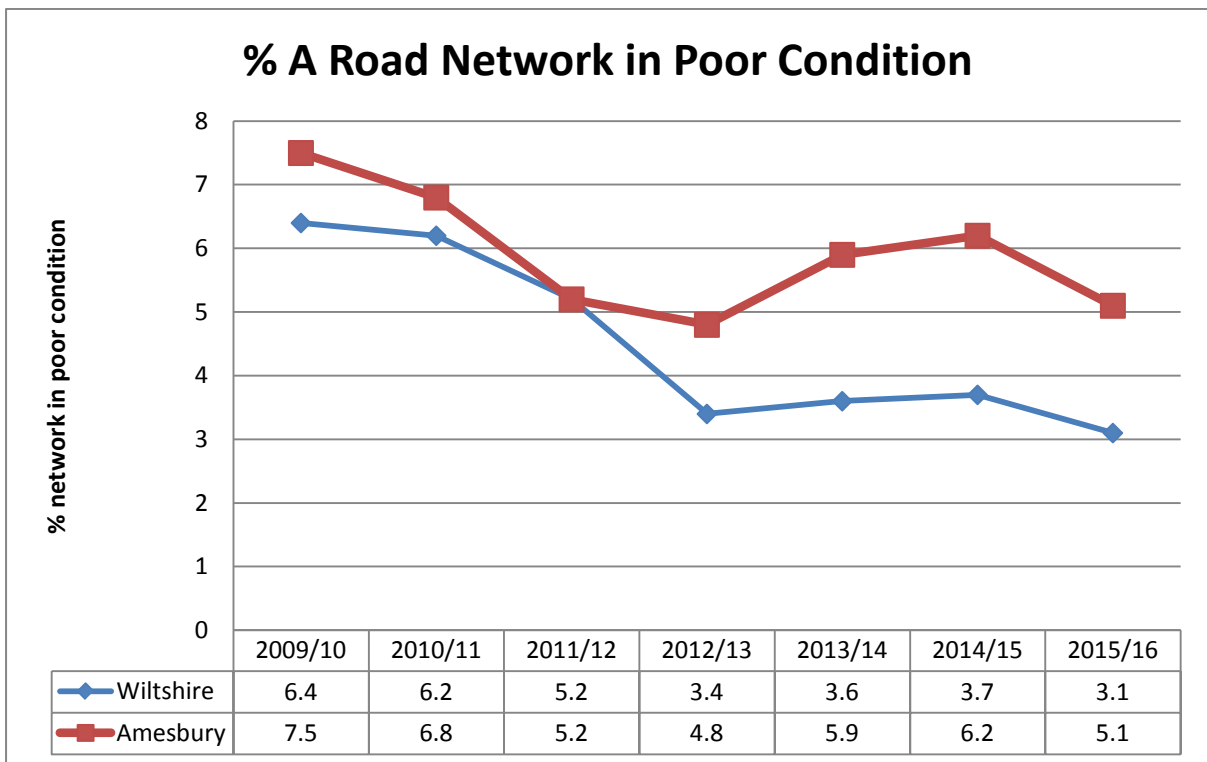
No	Location	Works
22	London Road into The Packway to Rolleston Crossroads	Resurfacing
23	A360 Shrewton - Tilshead	Resurfacing
24	C293, Allington	Surface Dressing
25	Wyndham Lane, Allington	Surface Dressing
26	C32 Milston Rd	Surface Dressing
27	A338 The Winterbournes	Skid Resistance Improvements
28	A338 The Winterbournes	Skid Resistance Improvements
29	A338 The Winterbournes	Skid Resistance Improvements
30	London Road, Winterslow	Skid Resistance Improvements
31	A345 Salisbury Road, Amesbury	Skid Resistance Improvements

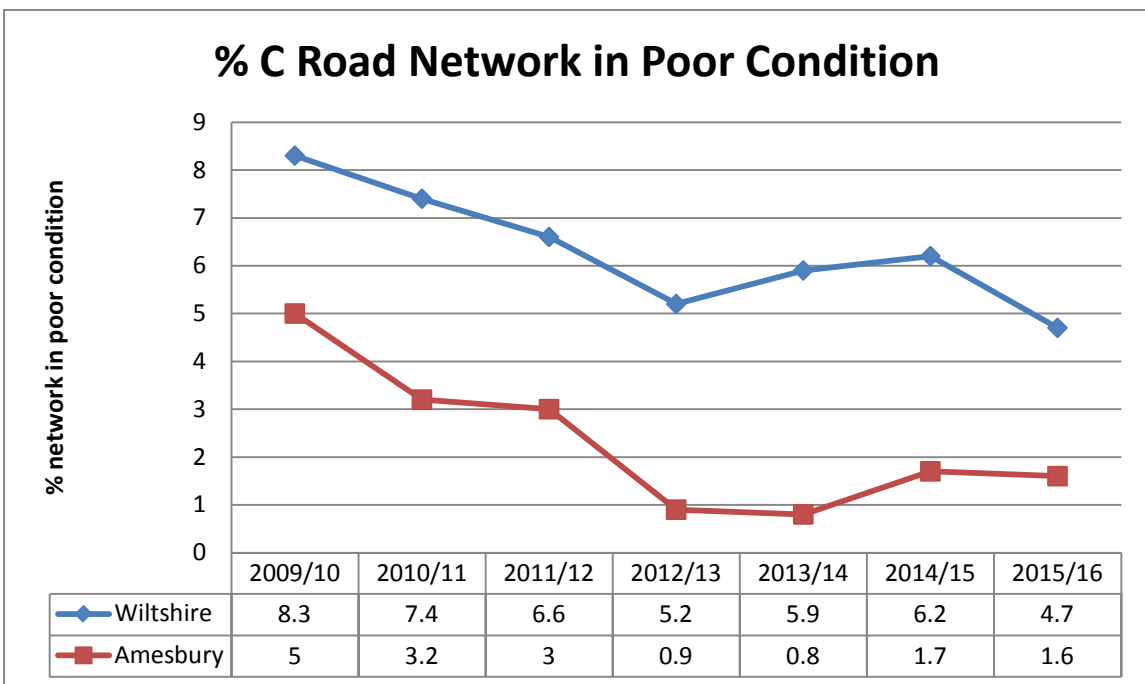
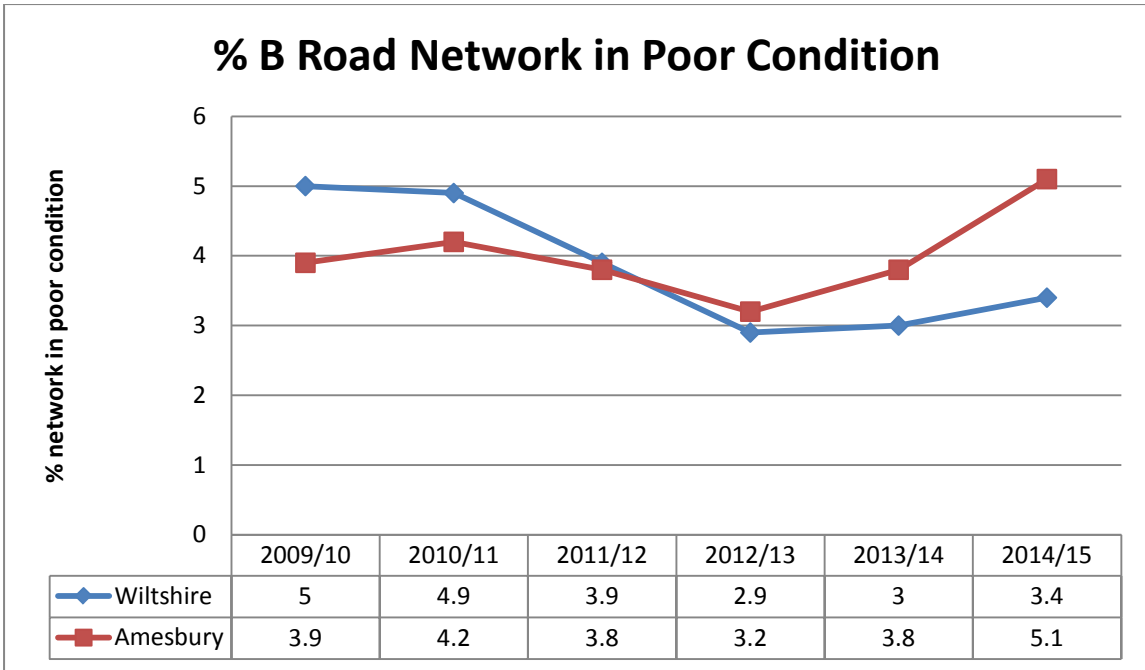
Highway conditions and technical surveys in your area

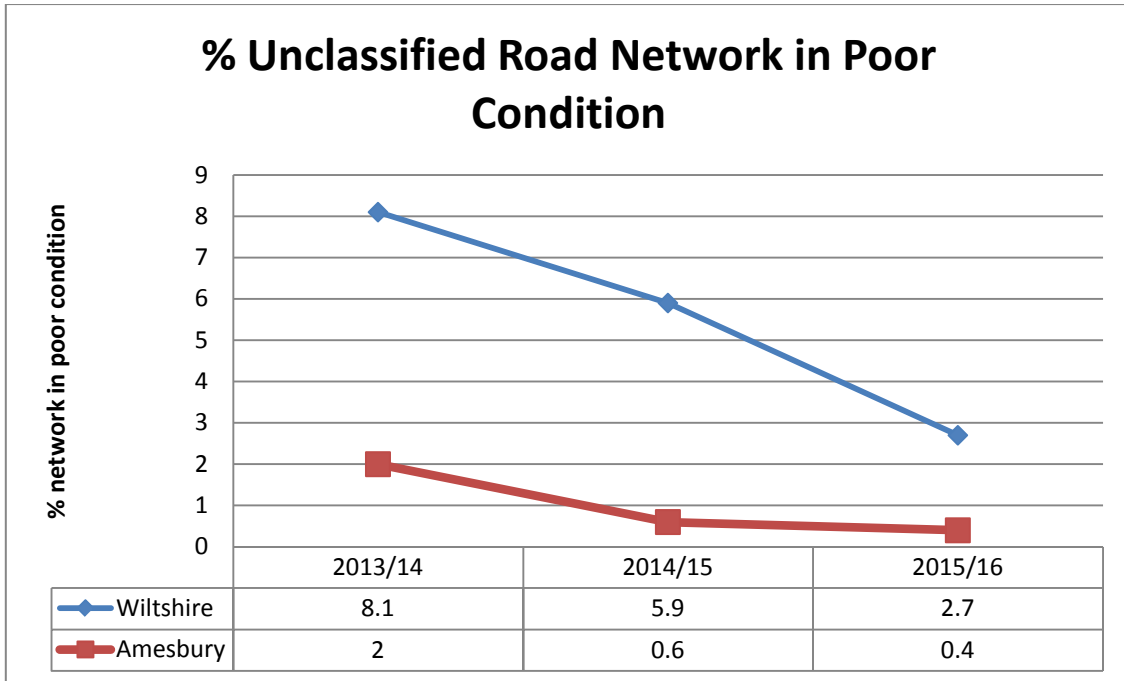
Roads deteriorate in condition because of various factors, including traffic volumes, ground conditions, and weather and drainage issues. Technical surveys of the condition of the highway network are carried out annually and the information is used to help prioritise schemes. Road safety is the priority, and maintaining adequate skid resistance on the busy high speed roads is vital.

The surveys include the use of a vehicle equipped with lasers and cameras to record road surface condition, which allows us to report on road conditions to the Department for Transport and to prioritise maintenance work. Other surveys include measuring skid resistance on the busier roads.

The road conditions in your area are shown below. It should be noted that low numbers are good because it indicates that less road length should be considered for treatment. More detailed information is shown in Appendix A.







Integrated transport, bridge and drainage works

Integrated transport

The Council's traffic engineering team work with our contractors to plan and deliver a range of projects to the local community, most notably through the Area Boards and Community Area Transport Groups (CATGs). The schemes range in size and complexity from simple sign installation through to more complex road safety and improvement schemes.

Bridges

The Council regularly inspects its bridges and other highway structures. There is a programme of renewal and refurbishment works to keep them in good condition, as well as having to respond to damage caused by collisions.

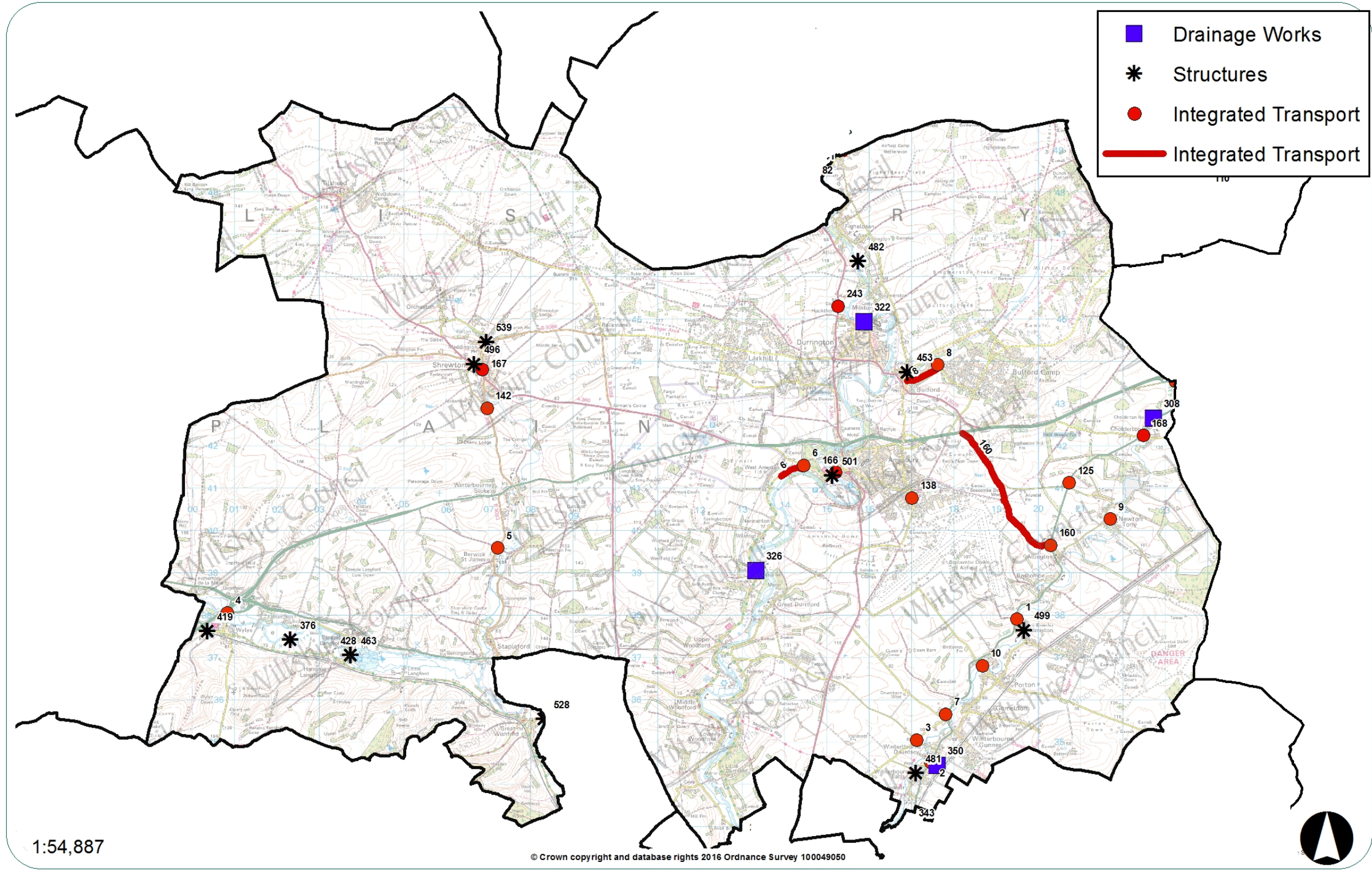
Drainage

Programmes of drainage investigations, repairs and flood alleviation schemes are undertaken throughout the year, but the flooding in recent years has meant that there has been a need to respond immediately to flooding issues, as well as dealing with previously identified problem sites. The drainage improvement and flood alleviation work is co-ordinated through the Council's Operational Flood Working Groups that include the Environment Agency, Wessex Water, other organisations and stakeholders.

Recent work in your area

The Integrated Transport, Bridge and Drainage schemes carried out in your area since 2015 are listed below.

Amesbury Area Board



Plan showing completed integrated transport, bridge and drainage schemes since 2015

Integrated transport schemes since 2015

No	Location	Description
1	A338 Idmiston /Church Road	Traffic Management
2	Winterbourne Earls	Winterbourne Earls Glebe Hall village signs
3	Winterbourne Gunner	Winterbourne Gunner, Gatters Lane / Portway junction
4	Highway Street, Wyle	Wylde High Street bollards
5	B3083 Berwick St James	Berwick St James, B3083 Review of speed limit signs
6	C42	C42 speed limit implementation
7	A338 West Gomeldon	West Gomeldon, A338 Portway footway
8	Churchill Avenue, Bulford	Bulford, Churchill Avenue 20mph speed limit
9	Newton Toney	Newton Toney, no through road sign
10	Winterslow Road, Porton	Porton, Winterslow Road footway
120	A338	A338 - Direction signs concerning Andover Business Park
125	A338, Newton Toney	A338 Newton Tony - relocate warning sign
138	Boscombe Down	Amesbury / Boscombe Down Main Road - warning signs and markings
142	B3083, Shrewton	B3083 Shrewton - speed limit terminal signs
160	Boscombe Down	Boscombe Down Allington Track / Winterslow Road - signs and markings
166	Amesbury	Amesbury Waiting Restrictions
167	Shrewton	Shrewton Parsons Green street nameplates
168	Cholderton	Cholderton Old Road/A338 hazard marker posts
243	A345 Netheravon Road	A345 Netheravon Road - Durrington - Path to Cemetery

Bridge schemes since 2014

No	Location	Description
376	Ballington Manor	Bridge Repair
419	Dyers Lane	Incursion Works
428	Steeple Langford Bridge.	Vegetation Works
453	Vicarage Bridge Bulford	Concrete Repair
463	Steeple Langford Bridge	Replacement
481	Drove Footbridge, Winterbourne	Deck Replacement Works
482	Gunville Hatches Footbridge	Deck Maintenance Works
496	A360 Shrewton Retaining Wall reconstruction	Partial Rebuild
499	Idmiston Bridge	Scour Protection
501	Queensbury Footbridge	Replacement Works
528	Great Wishford Bridge	Masonry Works
539	Laundry Bridge	Parapet Repair

Drainage works since 2015

No	Location	Description
308	Amesbury	Replacement of kerb drainage and barriers
322	Amesbury	New outfall across private gardens
326	Amesbury	Surface water drainage Scheme
350	Amesbury	Refurbishment of soakaway

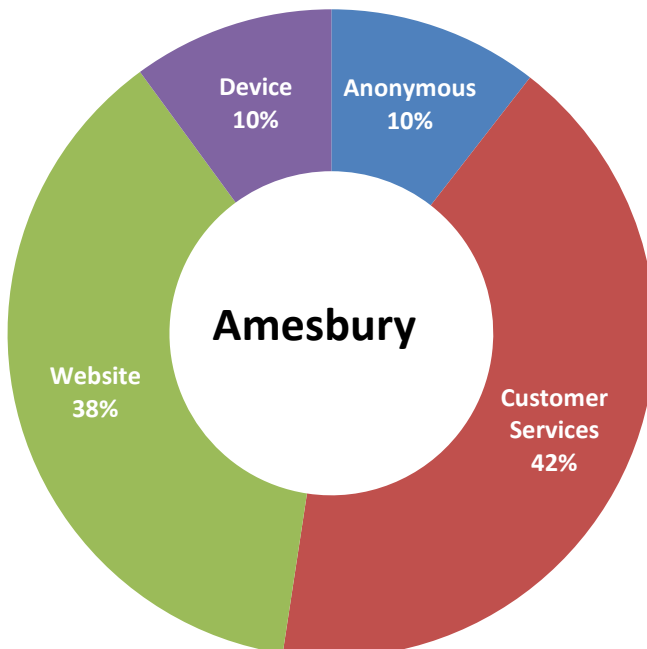
My Wiltshire



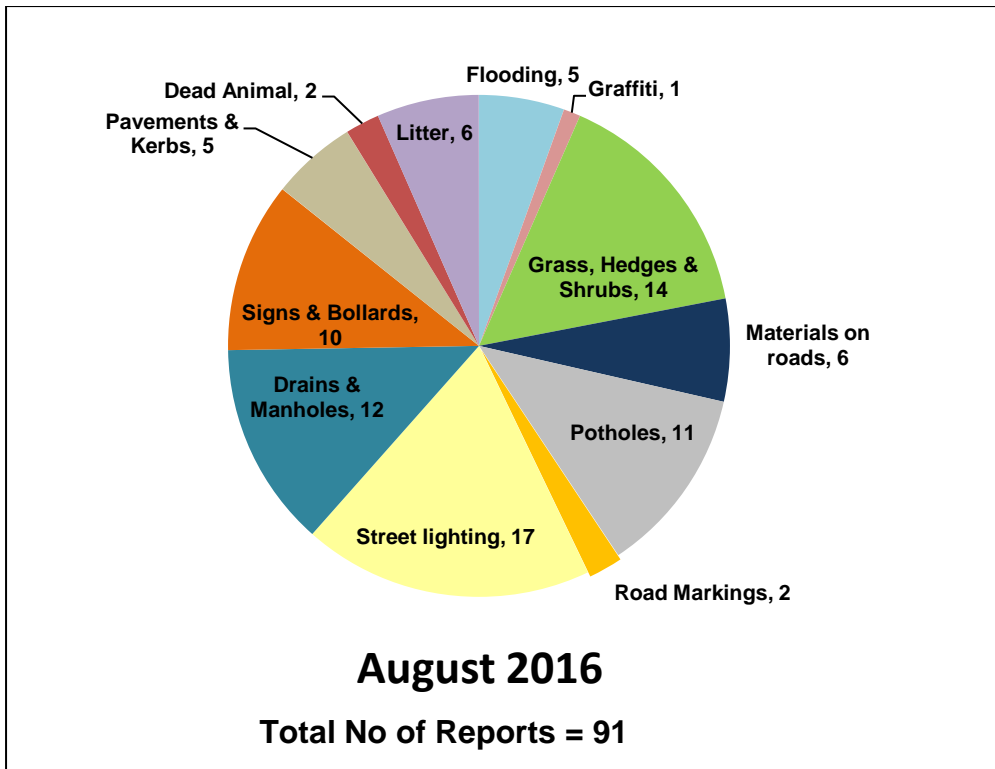
My Wiltshire provides an easy way to report highway issues, including using the Council's website. We have an app so you can report on the go using your smartphone. The My Wiltshire app is available to download at both the [App Store](#) (for iPhones and iPads), from [Google Play](#)[™] (for Android phones) and Windows Store. You can attach information such as photos or videos and pinpoint the location of your report using the mapping software on your phone.

A summary of recent reports in your area is shown below, and further details are shown in Appendix B.

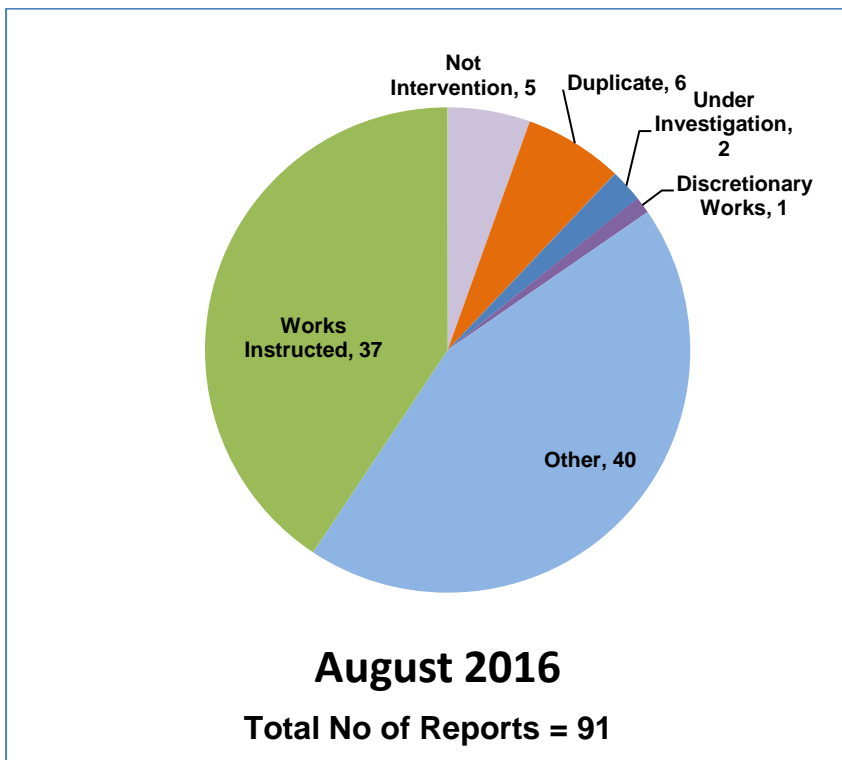
Customer reporting methods in your area



Customer reports in your area for the month of August 2016



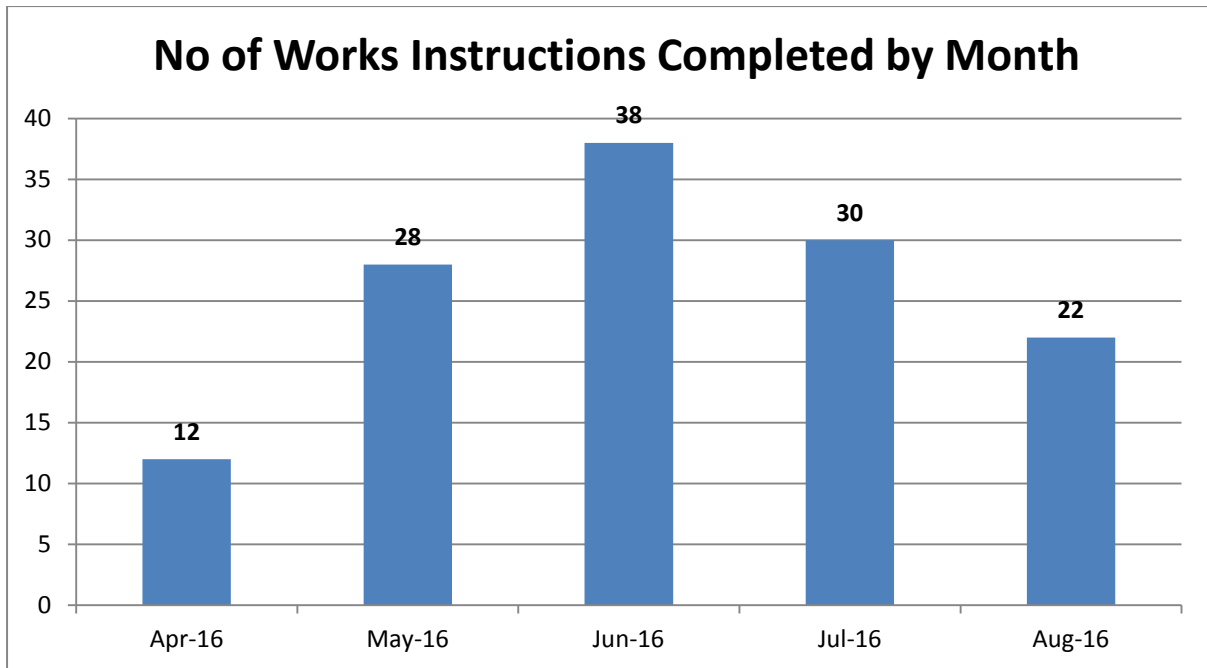
Actions following recent reports in your area



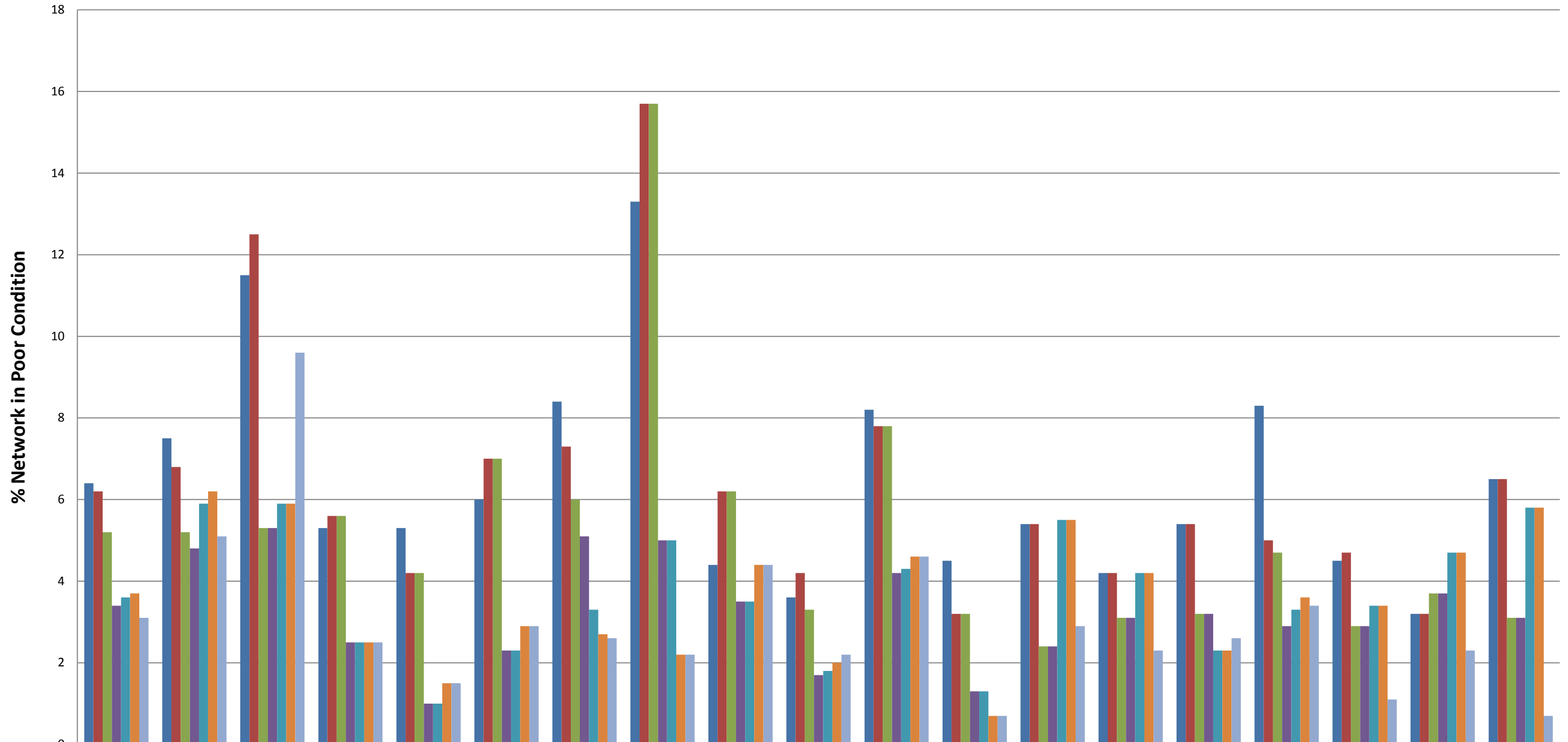
Action definitions

1. **Not Intervention** – the technician has attended site and classified the defect as not meeting intervention levels as per the Highway Inspection Manual 2013 or in the case of streetscene reports, service level agreements.
2. **Duplicate** – a report has already been received in relation to this issue and a works instruction has previously been passed to the contractor to undertake a repair/carry out the necessary works.
3. **Under Investigation** – this issue is currently with a Highways technician or engineer – they may be awaiting information from the customer or the issue requires further investigation e.g. wet weather inspection, drainage survey, exploratory excavation, ownership query.
4. **Discretionary works** – this issue is not a highway safety issue and has been identified as one which falls within the remit of the parish steward scheme.
5. **Other** – the issue has been identified as one which does not require any action by Local Highways. This could be for a number of reasons –
 - the report has been cancelled by the user,
 - there is insufficient information provided to assess the issue and the customer has not provided contact details,
 - the issue is not the responsibility of Wiltshire Council e.g. un-adopted highway, gas/electricity/telephone/water/cable company, Highways England, housing association,
 - the technician attended site and nothing was found at the stated location
 - the issue has been passed to another service within Wiltshire Council e.g. rights of way, bridges.
6. **Works Instructed** – the technician has assessed the issue as requiring works to be carried out and has either dealt with the issue personally or has referred it to the contractor for repair.

Highway defects completed in your area in recent months

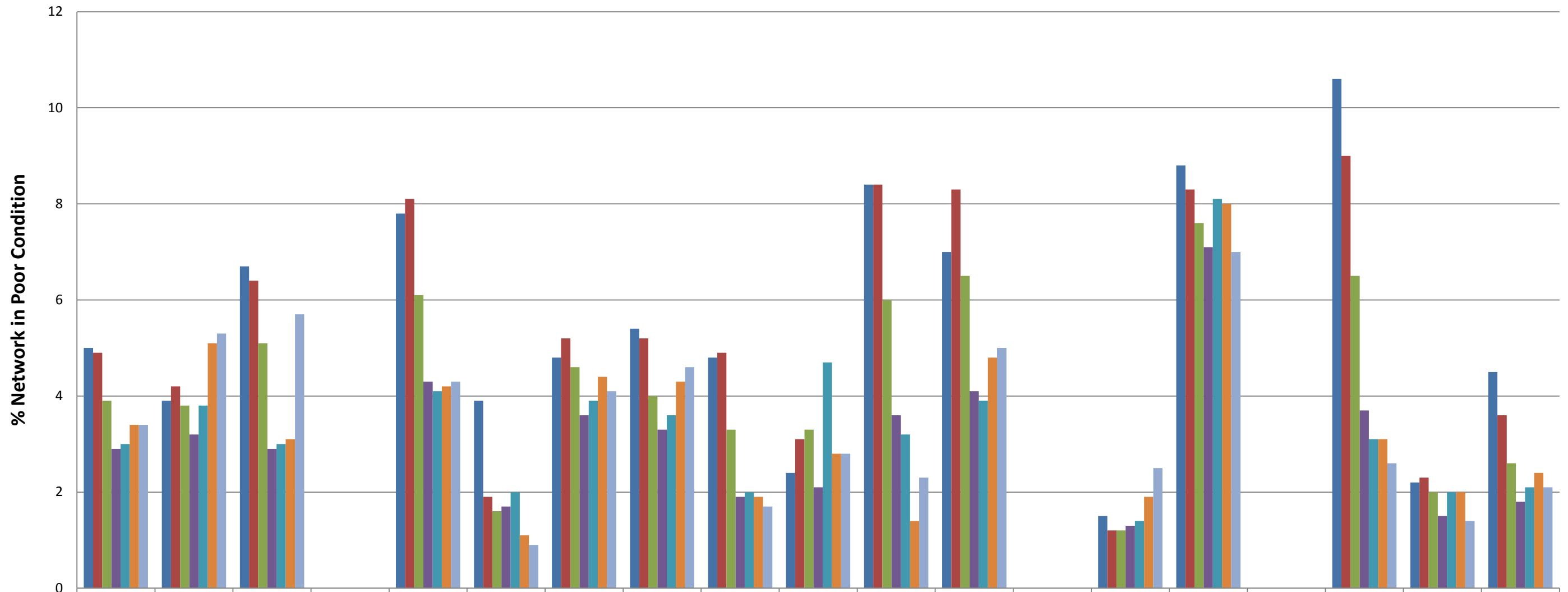


% A Road Network in Poor Condition



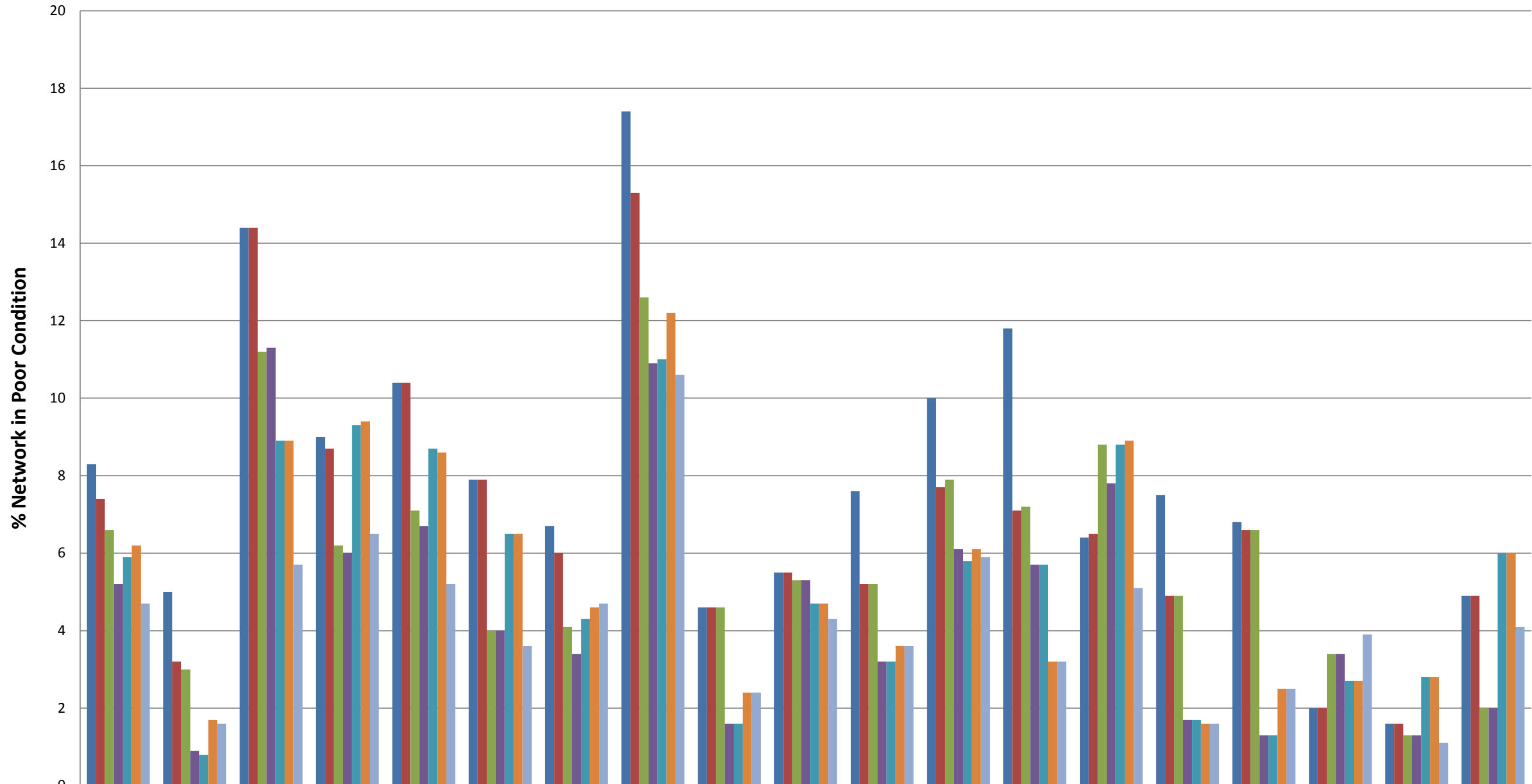
	Wiltshire	Amesbury	Bradford On Avon	Calne	Chippenham	Corsham	Devizes	Malmesbury	Marlborough	Melksham	Pewsey	Royal Wootton Bassett & Cricklade	Salisbury	South West Wiltshire	Southern Wiltshire	Tidworth	Trowbridge	Warminster	Westbury
■ 2009/10	6.4	7.5	11.5	5.3	5.3	6	8.4	13.3	4.4	3.6	8.2	4.5	5.4	4.2	5.4	8.3	4.5	3.2	6.5
■ 2010/11	6.2	6.8	12.5	5.6	4.2	7	7.3	15.7	6.2	4.2	7.8	3.2	5.4	4.2	5.4	5	4.7	3.2	6.5
■ 2011/12	5.2	5.2	5.3	5.6	4.2	7	6	15.7	6.2	3.3	7.8	3.2	2.4	3.1	3.2	4.7	2.9	3.7	3.1
■ 2012/13	3.4	4.8	5.3	2.5	1	2.3	5.1	5	3.5	1.7	4.2	1.3	2.4	3.1	3.2	2.9	2.9	3.7	3.1
■ 2013/14	3.6	5.9	5.9	2.5	1	2.3	3.3	5	3.5	1.8	4.3	1.3	5.5	4.2	2.3	3.3	3.4	4.7	5.8
■ 2014/15	3.7	6.2	5.9	2.5	1.5	2.9	2.7	2.2	4.4	2	4.6	0.7	5.5	4.2	2.3	3.6	3.4	4.7	5.8
■ 2015/16	3.1	5.1	9.6	2.5	1.5	2.9	2.6	2.2	4.4	2.2	4.6	0.7	2.9	2.3	2.6	3.4	1.1	2.3	0.7

% B Road Network in Poor Condition



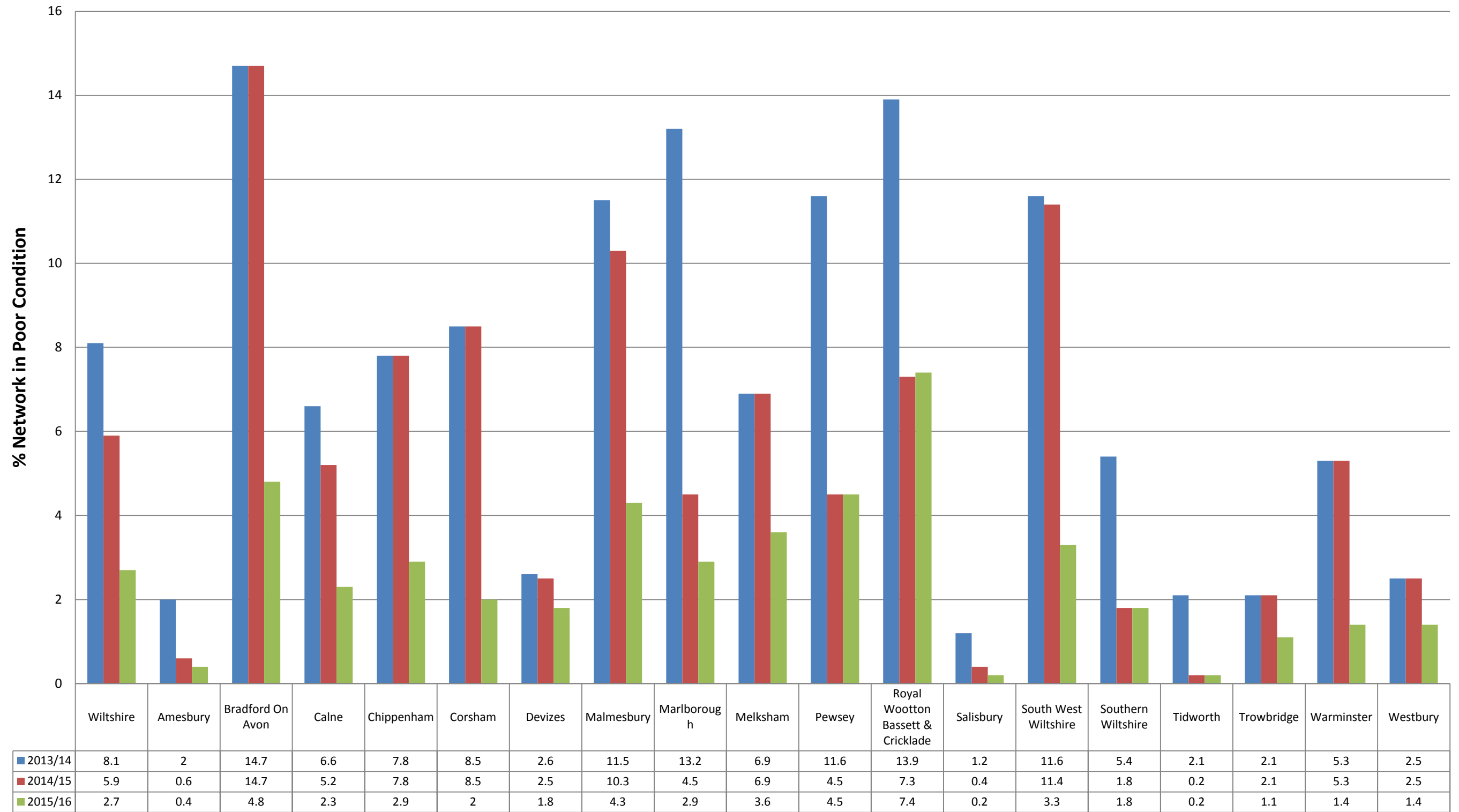
	Wiltshire	Amesbury	Bradford On Avon	Calne	Chippenham	Corsham	Devizes	Malmesbury	Marlborough	Melksham	Pewsey	Royal Wootton Bassett & Cricklade	Salisbury	South West Wiltshire	Southern Wiltshire	Tidworth	Trowbridge	Warminster	Westbury
■ 2009/10	5	3.9	6.7	0	7.8	3.9	4.8	5.4	4.8	2.4	8.4	7	0	1.5	8.8	0	10.6	2.2	4.5
■ 2010/11	4.9	4.2	6.4	0	8.1	1.9	5.2	5.2	4.9	3.1	8.4	8.3	0	1.2	8.3	0	9	2.3	3.6
■ 2011/12	3.9	3.8	5.1	0	6.1	1.6	4.6	4	3.3	3.3	6	6.5	0	1.2	7.6	0	6.5	2	2.6
■ 2012/13	2.9	3.2	2.9	0	4.3	1.7	3.6	3.3	1.9	2.1	3.6	4.1	0	1.3	7.1	0	3.7	1.5	1.8
■ 2013/14	3	3.8	3	0	4.1	2	3.9	3.6	2	4.7	3.2	3.9	0	1.4	8.1	0	3.1	2	2.1
■ 2014/15	3.4	5.1	3.1	0	4.2	1.1	4.4	4.3	1.9	2.8	1.4	4.8	0	1.9	8	0	3.1	2	2.4
■ 2015/16	3.4	5.3	5.7	0	4.3	0.9	4.1	4.6	1.7	2.8	2.3	5	0	2.5	7	0	2.6	1.4	2.1

% C Road Network in Poor Condition



	Wiltshire	Amesbury	Bradford On Avon	Calne	Chippenham	Corsham	Devizes	Malmesbury	Marlborough	Melksham	Pewsey	Royal Wootton Bassett & Cricklade	Salisbury	South West Wiltshire	Southern Wiltshire	Tidworth	Trowbridge	Warminster	Westbury
2009/10	8.3	5	14.4	9	10.4	7.9	6.7	17.4	4.6	5.5	7.6	10	11.8	6.4	7.5	6.8	2	1.6	4.9
2010/11	7.4	3.2	14.4	8.7	10.4	7.9	6	15.3	4.6	5.5	5.2	7.7	7.1	6.5	4.9	6.6	2	1.6	4.9
2011/12	6.6	3	11.2	6.2	7.1	4	4.1	12.6	4.6	5.3	5.2	7.9	7.2	8.8	4.9	6.6	3.4	1.3	2
2012/13	5.2	0.9	11.3	6	6.7	4	3.4	10.9	1.6	5.3	3.2	6.1	5.7	7.8	1.7	1.3	3.4	1.3	2
2013/14	5.9	0.8	8.9	9.3	8.7	6.5	4.3	11	1.6	4.7	3.2	5.8	5.7	8.8	1.7	1.3	2.7	2.8	6
2014/15	6.2	1.7	8.9	9.4	8.6	6.5	4.6	12.2	2.4	4.7	3.6	6.1	3.2	8.9	1.6	2.5	2.7	2.8	6
2015/16	4.7	1.6	5.7	6.5	5.2	3.6	4.7	10.6	2.4	4.3	3.6	5.9	3.2	5.1	1.6	2.5	3.9	1.1	4.1

% Unclassified Road Network in Poor Condition



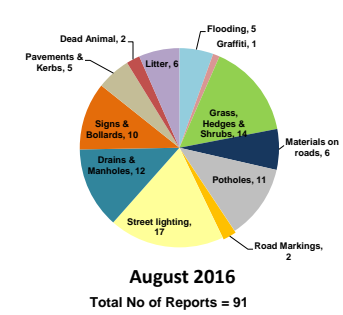
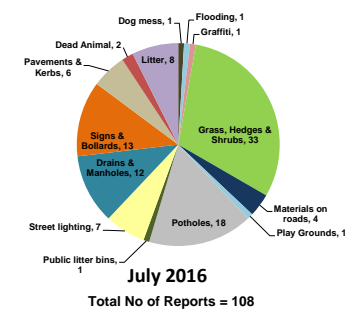
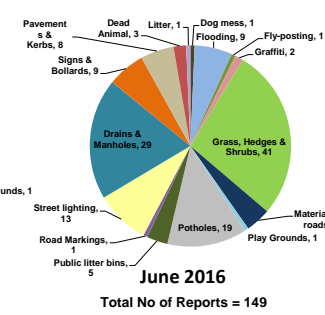
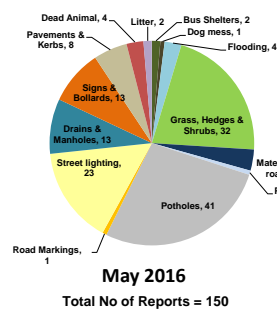
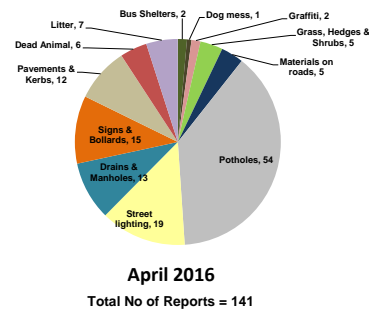
Appendix B: My Wiltshire Statistics



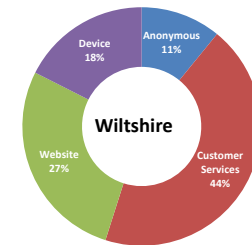
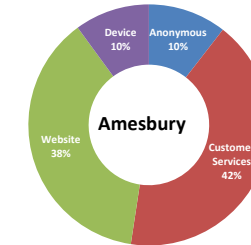
Amesbury Area Board



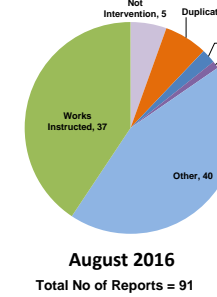
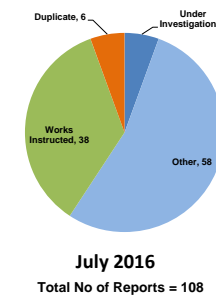
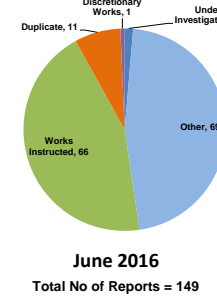
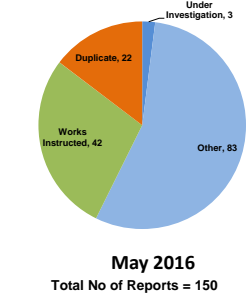
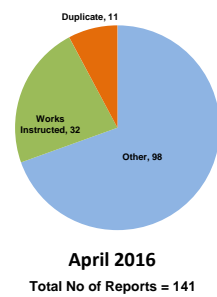
Customer Reported Issues



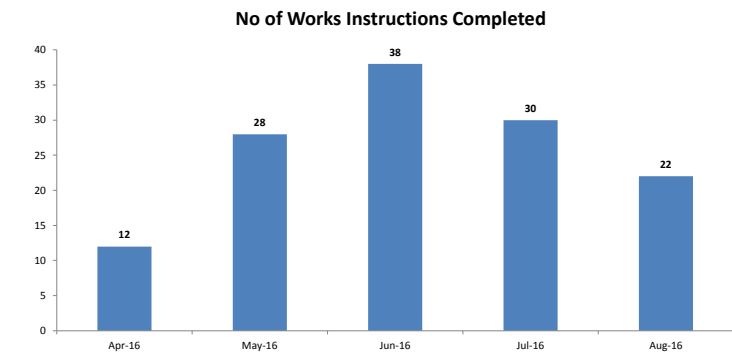
Reporting Channels



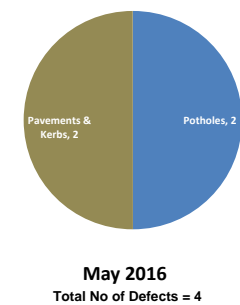
Customer Call Outcomes



Completed in Month



Safety Inspections



APPENDIX 2

Road	Amesbury	Recommended Treatment	Estimated Length (m)	Est Area of Site (m²)
A345	A345 Netheravon Rd/Salisbury Rd	Surfacing	1,400	9,184
A338	A338 between Cholderton Rd, Newton Toney & Amesbury Rd Cholderton	Surfacing	60	198
A3028	A3028 Bulford Double Hedges	Retexture	270	810
A345	A345 Netheravon Piggott Close to Mill Road	Retexture	230	713
A338	A338 Porton at The Avenue	Surfacing	230	1,472
A360	A360 North of Tilshead at Tank Crossing 'Foxtrot'	Surfacing	100	640
A345	A345 Salisbury Rd, Netheravon	Surface Dressing	1,136	7,229
A360	A360 Shrewton – Tilshead	Surface Dressing	4,121	26,000
B390	B390 Shrewton at Maddington Farm	Retexture	120	780
B390	B390 Shrewton at Middle Croft Farm	Retexture	100	290
C293	C293 Allington	Surfacing	557	2,555
C42	C42 Lower Woodford	Surfacing	1,469	7,677

Road	Amesbury	Recommended Treatment	Estimated Length (m)	Est Area of Site (m²)
C32	Milston Road	Surface Dressing	1,052	4,734
UC	Durnford	Surfacing	375	1,775
UC	Bulford Droveaway, Bulford	Surfacing	457	2,977
UC	Amesbury Solstice Park Avenue	High Friction Surfacing	63	422

**WILTSHIRE COUNCIL
AMESBURY AREA BOARD**

2nd March 2017

**Amesbury ‘Our Community Matters’
Local priorities for action**

1. Purpose of the Report

To update members on the outcome of the ‘Our Community Matters’ Joint Strategic Assessment event held on 26/01/2017 and to recommend that the Area Board endorses the outcomes.

2. Background

The Amesbury ‘Our Community Matters’ event was held on 26th January 2017 at Antrobus House, Amesbury. Over 100 members of the public and partner agencies attended and participated in the event, which focused on the data set out in the [Community Area Joint Strategic Assessment 2016-17](#).

The JSA brings together the results of research conducted by the major agencies and public sector bodies in Wiltshire over the last six months. The project was initiated by the Wiltshire Health and Wellbeing Board and the Wiltshire Assembly. These bodies will use the priorities emerging from the events to focus and support strategic projects, activities and services across Wiltshire.

Participants at the events used the data to inform themed roundtable discussions and to identify local priorities underpinned by the research. All participants had the opportunity to vote on the priorities and the results are set out in this report. Following agreement on the priorities, the themed roundtables then looked at practical community-led actions that could be taken to address the issues identified.

The purpose of the event was to:

- Gain a consensus around priorities for the area
- Provide the basis for community-led action and projects over the next two years
- Develop a community plan for the area
- Provide the Council and partners with a clear focus for local actions

The Area Board is now invited to review the priorities and agree how it wishes to initiate and coordinate action working with partners, community groups and the public.

3. **Priorities identified**

The following documents set out the outcomes of the meeting and the priorities identified:

Online video - achievements over the last two years https://youtu.be/upMVA_bUNHo

- Appendix 1 - summary of issues identified by the research
- Appendix 2 - priorities agreed at the event
- Appendix 3 – potential projects identified

4. **Moving forward with community-led action**

To address the priorities, the Area Board will need to use its strategic influence and delegated powers to shape the delivery of local services and actions. It will also need to use its delegated resources to facilitate and support community-led projects. Some of the actions will be easier to address than others and it is important to target areas where tangible outcomes and progress can be delivered. This will help to capitalise on the enthusiasm and momentum generated by the event.

It will be up to the Area Board whether it wishes to champion a particular issue or theme over the next year and to target resources to support community-led initiatives around these themes and issues.

5. **Recommendations**

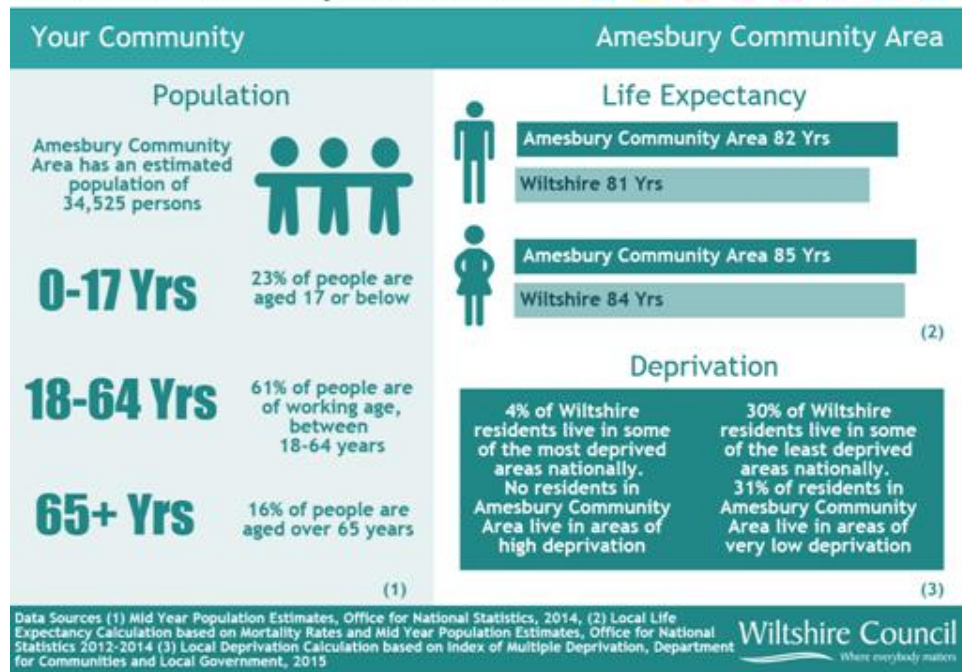
- (1) That the Area Board adopts the priorities identified by the 'Our Community Matters' event and works to facilitate local action to tackle those priorities.
- (2) That the Area Board requests the Local Youth Network, the Health and Wellbeing Group and the Community Area Transport Group (and any other local task groups established by the Board) to adopt and take forward the priorities identified in the relevant theme areas.
- (3) That the Area Board requests the Community Engagement Manager to work with key partners, agencies and community groups to coordinate action around the priorities identified.
- (4) That the Board considers whether it wishes to champion a particular theme or priority and to earmark funding to promote, initiate and support community-led action around the selected priorities.

- (5) That reports are submitted to the Board on progress made to address the priorities to ensure that positive outcomes are delivered and that this be made a regular item on future Board meetings.
- (6) The Area Board expresses its thanks to the people who gave their time to participate in the event.

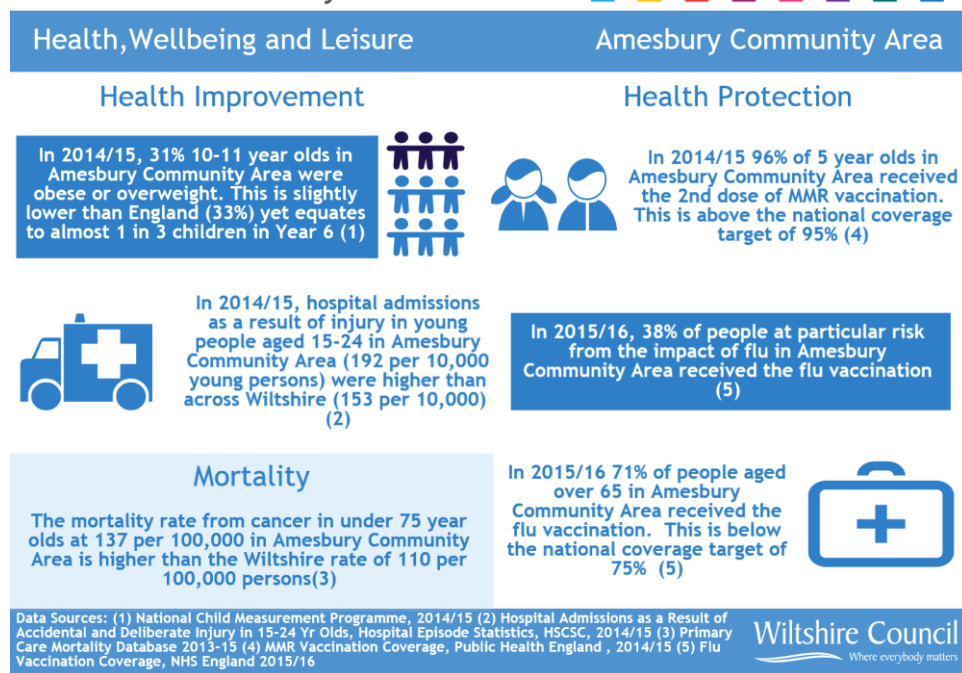
Report Author: Dave Roberts, Amesbury Community Engagement Manager
Tel: 01249 706380 07979318504
E-Mail: dave.roberts@wiltshire.gov.uk

Appendix 1 Summary of Issues identified

Wiltshire Community Area JSA 2016



Wiltshire Community Area JSA 2016





Children and Young People Amesbury Community Area

Children in Need

8.2% of children and young people under 20 in Amesbury Community Area live in low income families. This is lower than the Wiltshire average of 10.6% (1)



The rate of 0-18 year olds supported by a Common Assessment Framework (CAF) in Amesbury Community Area in 2015 was 39 per 10,000 compared to 34 per 10,000 across Wiltshire (2)

The rate of 0-25 year olds supported by Children's Social Care (CSC) in Amesbury Community Area in 2016 was 256 per 10,000 compared with 282 per 10,000 in Wiltshire (3)

Education and Pupil Achievement



In 2015, the percentage of children achieving level 4 or above in reading, writing and mathematics at the end of primary school was lower in Amesbury Community Area (73%) than that across Wiltshire (80%) (4)

In 2015, the percentage of young people achieving 5 or more GCSE's including English and Maths at grades A*-C at the end of secondary school was lower in Amesbury Community Area (48%) than across Wiltshire (61%) (5)



Data Sources: (1) Percentage of Children and Young People Under 20 in Low Income Families, 2013, HMRC, (2) Rate per 10,000 0-18 Year Olds Supported by a Common Assessment Framework, 2015, Wiltshire Council Childrens Services, (3) Rate per 10,000 0-25 Year Olds Supported by Children's Social Care, 2016, Wiltshire Council Childrens Services, (4) and (5) Key Stage 2 and 4 Attainment, 2015, Local Authority Interactive Tool (LAIT)



Older People Amesbury Community Area

Older People



43% of the population over the age of 65 in Amesbury Community Area are at a higher risk of social isolation compared to 35% across Wiltshire (1)

85+ Years

2% of the population of Amesbury Community Area are over the age of 85 years. 38% are male, 62% are female (4)

75% of persons estimated to have Dementia in Amesbury Community Area have been diagnosed with the condition. This is higher than the Dementia diagnosis rate throughout Wiltshire (67%) (2)

In 2014/15, the rate of hospital admissions due to falls in persons over the age of 65 in Amesbury Community Area (1,832 per 100,000 persons) was similar to Wiltshire as a whole (1,880 per 100,000) (3)



Carers



7 per 1,000 persons under 65 in Amesbury Community Area are unpaid carers. This is lower than across Wiltshire as a whole (11 per 1,000)

36 per 1,000 persons over 65 in Amesbury Community Area are unpaid carers compared with 39 per 1,000 in Wiltshire



(5)

Data Sources (1) Map of Loneliness, Age UK, 2015 (2) Dementia Diagnosis Rate, NHS Wiltshire CCG, May 2016 (3) Emergency Hospital Admissions Due to Falls in Persons Over 65 Years, Central and South West Commissioning Support Unit, 2014-15 (4) Mid Year Population Estimates, Office for National Statistics, 2014 (5) Persons Known to Carer Support Wiltshire, Carer Support Wiltshire, June 2016



Community Safety Amesbury Community Area

Safer Communities

In 2015/16, the rate of reported anti social behaviour in Amesbury Community Area was 14 reports per 1,000 persons. This is lower than across Wiltshire (19 per 1,000) (1)

In 2015/16 31 referrals to Community Resolution, a mechanism used to manage cases of anti social behaviour, were made from Amesbury Community Area (2)

In 2015/16, the rate of reported domestic abuse in Amesbury Community Area was 6 incidents per 1,000 persons. This is slightly lower than that across Wiltshire over the same time frame (7 per 1,000) (3)

Substance Misuse

There are over 1,500 premises licensed to sell alcohol in Wiltshire, 6% of them (95 premises) are in Amesbury Community Area (4)

In 2014/15, rates of alcohol related hospital admissions were higher in Amesbury Community Area (2,043 per 100,000 persons) than that across Wiltshire (1,905 per 100,000) (5)

Road Safety

Reported road traffic collisions in Wiltshire have risen by almost 30% between 2010-2014.

In 2015, 103 road traffic collisions were reported in Amesbury Community Area, the second highest number of RTCs reported across all 20 Community Areas (6)

Data Sources (1) Incidents of Anti Social Behaviour 2014/15 - 2015/16, Wiltshire Police, (2) Referrals to Community Resolution 2015/16, Wiltshire Council (3) Incidents of Domestic Abuse, 2014/15 - 2015/16, Wiltshire Police (4) Number of Licensed Premises, as at 1st July 2016, Wiltshire Council (5) Alcohol Related Hospital Admissions Hospital Admission Data Provided by South, Central and West CSU 2014/15 (6) Road Traffic Collisions, Department for Transport, 2015



Housing Amesbury Community Area

Local Housing

15% of households in Amesbury Community Area are socially rented. This is similar to Wiltshire as a whole (14.7%) (1)

In September 2016 there were 126 households in the Community Area awaiting social housing. There is a higher demand for 2 bedroom properties from persons on the housing register in this area (33% of requests) compared to Wiltshire as a whole (29%) (2)

It is estimated that the number of households affected by the 2016 Benefit Cap will be slightly higher in Amesbury Community Area (20 per 10,000 households, than across Wiltshire (19 per 10,000 households) (3)

Between April 2013 and March 2016, 48 affordable homes were completed in Amesbury Community Area (4)

Between 2014-16, over 400 homes were adapted to help older residents and persons with disabilities live independently in their own homes, almost 6% of these were in Amesbury Community Area (5)

Property Prices

The average house price in Amesbury Community Area is £238,500, slightly higher than the Wiltshire average of £230,000 (6)

Data Sources (1) Socially Rented Accommodation, Census 2011 (2) Wiltshire Council, September 2016 (3) Wiltshire Council 2015/16 (4) Wiltshire Council April 2013 - March 2016 (5) Wiltshire Council 2014-16 (6) Land Registry Price Paid Data, 2016



Environment		Amesbury Community Area	
<h3>Wildlife Rich Areas</h3> <p>23% of Amesbury Community Area is classified as either as a Site of Scientific Interest or a County Wildlife Site.</p> <p>Wiltshire has 168 SSIs and 1,560 County Wildlife Sites, covering 15% of the Local Authority Area (1)</p>		<h3>Waste and Recycling</h3> <p>In 2015/16, over 760 kgs of waste was collected per household from the South Area Collection Zone incorporating Amesbury, Mere, Salisbury, Southern Wiltshire, Tisbury and Wilton Community Areas.</p> <p>Almost half of this (46%) was either recycled or composted (4)</p>	
<h3>Local Emergency Plans</h3> <p>A community resilience workshop in Amesbury Community Area brought people together to consider local emergency plans. Since then 3 local parish plans have been completed (2)</p>			

Data Sources (1) Wiltshire Council 2016 (2) Wiltshire Council Public Protection Service (3) Wiltshire Council 2015/16



Transport		Amesbury Community Area	
<h3>Local Roads</h3> <p>In 2015/16, 5% of principal roads (motorways and A roads) in Amesbury Community Area were identified as requiring treatment. This is higher than across Wiltshire (3%)</p> <p>2% of non principal roads (B roads) in Amesbury Community Area were identified as requiring treatment in 2015/16. This is slightly lower than that across Wiltshire as a whole (4%)</p> <p>In 2015/16, the cost of re-surfacing roads in Amesbury Community Area was £4,452 per km compared to an average of £2,397 per km throughout Wiltshire (1)</p>		<h3>Local Traffic</h3> <p>Average daily traffic has decreased by less than 1% in Amesbury Community Area since 2007 (2)</p>	
		<h3>Parking</h3> <p>The usage of car parks owned by Wiltshire Council in Amesbury Community Area was 34.5% in 2015. This is lower than the average usage across Wiltshire (52.9%)(3)</p>	

Data Sources: (1) Road Maintenance Data, Wiltshire Council, 2015/16 (2) Average Annual Daily Traffic (AADT) 2007-2015 Comparison, Wiltshire Council, 2015 (3) Parking Usage in Key Wiltshire Council Car Parks, Wiltshire Council, 2015





Economy Amesbury Community Area

Employment

According to a 2014 survey of local businesses, the biggest two employment sectors in Amesbury Community Area are scientific and technical services and health and social care (1)



0.4% of people of working age in Amesbury Community Area receive Jobseekers Allowance. This is lower than Wiltshire (0.8%) and England as a whole (1.8%) (2)

Local Developments

The Army Basing Programme will locate an additional 4,000 army personnel and 3,200 dependants across Wiltshire by 2020, two thirds of which will be based at sites in Amesbury Community Area.

The Ministry of Defence is providing a £1 billion investment to support this programme across the county that includes £20 million for school places alone (3)



18-24

0.2% of people aged 18-24 yrs in Amesbury Community Area receive Jobseekers Allowance. This is lower than both Wiltshire (1.7%) and England (2.5%) 67% of this group are young men (2)

Data Sources: (1) Business Register and Employment Survey (BRES; excludes MOD) Data, Office for National Statistics, 2014 (2) Official Labour Market Statistics, Nomisweb, Office for National Statistics, 2014 (3) Wiltshire Council, 2016



Culture Amesbury Community Area

Cultural Assets



Amesbury Community Area is home to the Unesco World Heritage Site of Stonehenge, the prehistoric monuments of Woodhenge and Durrington Walls, 653 listed buildings and 25 venues hosting cultural programmes



Amesbury Community Area has 13 Sites of Special Scientific Interest and 86 County Wildlife Sites

(1)

Your Library



22% of residents in Amesbury Community Area are currently members of the local libraries compared with 41% across Wiltshire.

A total of 48,200 visits to libraries in Amesbury were recorded in 2015/16

Over 800 volunteers help out at libraries across Wiltshire including 35 in Amesbury Community Area

(2)



Local Engagement



2.2% of working people in Amesbury Community Area are employed in the arts, entertainment and recreation sector (3)

Local clubs and organisations promote cultural activities alongside news and events on the Amesbury 'Our Community Matters' website which was accessed almost 96,000 times in 2015/16. Across Wiltshire local information held on these sites was accessed almost 4 million times (4)

Data Sources: (1) Wiltshire Council, 2016 (2) Wiltshire Council Library Service, 2015/16 (3) Business Register and Employment Survey (BRES) Data, Office for National Statistics, 2014 (4) Number of Interactions with 'Our Community Matters' Websites, Community Engagement Team, Wiltshire Council 2015/16

Appendix 2 Priorities agreed at the event

Children and Young People

1. Mental and emotional Health
2. Educational attainment
3. Positive leisure time activities

Community Safety

1. Anti social behaviour
2. Alcohol and drug abuse
3. Highway safety

Culture

1. Local landscape and heritage
2. Diversity and inclusion
3. Arts, crafts and heritage economy

Economy

1. Inward investment
2. Support for existing business
3. New business creation

Environment

1. Fly tipping and litter
2. Recycling rates
3. Flooding

Health, wellbeing and leisure

1. Healthy lifestyles
2. Mental health
3. Support for carers

Older people

1. Social isolation and loneliness
2. Independent living
3. Dementia

Transport

1. Road improvements
2. Access to public transport
3. Speeding and road safety

Our community and housing

1. Affordable housing
2. Community events and activities
3. Army rebasing

Appendix 3 Potential projects identified

Children and Young People	
Top 3 Priorities Identified	Potential Projects
4. Mental and emotional Health 5. Educational attainment 6. Positive leisure time activities	Young Advisors – YP work with community leaders and decision makers to engage YP in community life and decision making
	Young Ambassadors – Young adults trained to offer advice and support for younger people. Generally they work on a self-employed basis being paid for the hours they put in
	Access to Activities – More access to sports including all weather pitches outdoor exercise, forest schools and wildlife areas
	Holiday Activities – A programme of organised activities through the summer holidays
	Information – Increased awareness of local organisation to promote volunteers and participation
	Time Credits – An hour for an hour. Rewards those who volunteer with an hour's worth of credit to be 'spent' on a range of local activities and recreational trips. Encourages new volunteers and provides a 'thank you'.

Culture	
Top 3 Priorities Identified	Potential Projects
4. Local landscape and heritage 5. Diversity and inclusion 6. Arts, crafts and heritage economy	Photo Walks – Villagers capture photos of their favourite walks, documenting nature, buildings and heritage. The photos help encourage more people to walk and enjoy the local environment
	Our Lives, Our History – The memories of older people captured through interviews for posterity. Can focus on past trades and industry, farming, vocations, memorable events etc.
	Community Stories – A community documents its past using memories of older residents and everyday documents
	Walk Back in Time – Village historians and volunteers document the history of the village and publish a series of walks for local people – healthy, educational and great for building civic pride
	Overarching organisation – Develop a Amesbury community area society to coordinate villages and combine similar groups under one umbrella
	Town Trails – Walks linking villages and exploring historic landscapes and local heritage. Villager co-operate to maintain paths and produce guides

Older People	
Top 3 Priorities Identified	Potential Projects
1. Social isolation and loneliness 2. Independent Living 3. Dementia	Community Bus – A group of villages get together to fund a local taxi scheme. It can also involve public bus subsidy scheme
	Singing for the Brain – Social Clubs for people with later stage dementia. Singing is a social activity and the sessions often involve other recreational activities that give carers a break
	Garden Share – People who find it difficult to look after their garden can allow others to use their land or ask others to take care of it
	Men’s Shed – A shed where people come together to do stuff and socialise
	Art Therapy – Art sessions organised for people with conditions such as Dementia, stroke and disability
	Our Lives Our History – Memories of older people are captured. Could focus on past trades and history. Could link in with YP
	Community Lunches – Lunches for older more vulnerable people
	Fit for Life – Sessions for older people based around gentle physical activities such as walking, indoor bowls and dance
	Good Neighbours – Volunteers provide support, help, advice and friendship for the most isolated and vulnerable members of the community – who often want little more than the occasional chat
	Dementia Cafe – Nothing brings people together like a cup of coffee. Can involve trips and walks
	Link Schemes – Link Schemes are community based, volunteer run charities that offer a “good neighbour” service and includes transport
	Safe Places – Window stickers indicate places where people can go if they feel threatened, confused or worried

Our Community and Housing	
Top 3 Priorities Identified	Potential Projects
1. Affordable Housing 2. Community events and activities 3. Army Rebasing	Good Neighbours – Volunteers provide support, help, advice and friendship for the most isolated and vulnerable members of the community – who often want little more than the occasional chat and cuppa
	Civilian/ Military interaction – bring civilians and military together for a community event. Provide up to date information about expansion
	Local self build projects – Find out if there is land available for self build projects
	Gardeners Clubs – develop gardeners clubs in local communities
	Affordable homes – More affordable homes to help people stay in their community
	Community Land Trust – A community can promote housing or employment to meet local needs, shape the development of their place and retain control of housing and workshop allocations to benefit local people

Economy	
Top 3 Priorities Identified	Potential Projects
1. Inward investment 2. Support for existing businesses 3. New business creation	Relationship Building – Between economic stakeholders and policy makers to regenerate the town centre and provide support for existing businesses
	Networking – With local employers and schools to encourage work experience and apprenticeships
	Women on Wednesday – A group offering support, self help and social time for women running or wishing to start their own business. This could link in with Army spouses
	Co- work clubs – Space for business and start ups to work together, encourage sharing of skills, resources and marketing
	Skills4Life – Workshops run for young people providing info and help with understanding and planning for careers, finances, budgeting, cooking, housing etc.
	Festivals and fayres – Communities come together to launch a new fayre or festival, have fun and benefit local good causes. Can be themed to support the local economy

Environment	
Top 3 Priorities Identified	Potential Projects
1. Fly tipping and litter 2. Recycling rates 3. Flooding	Green team – people involved in various environmental projects and fun activities in the outdoors
	Drain mapping – Need to know where they all are. Concentrate efforts on getting them cleared
	Swap shop – Campaign for people to clear out unwanted items and others to take away free of charge to re-use them
	Food Champs – Volunteer network of individuals who can help people in a community who want to start growing their own foods
	Flood and Adverse Weather Wardens – Volunteers who monitor flood events, check watercourses, provide advice and weather warnings to those at risk and help coordinate local response
	Fly tipping cameras – Put cameras up in hot spots to identify and deter. Include a reporting process on My Wiltshire
	Swap Shop – A publicity campaign culminates in a day of junk swapping. People clear out garages, sheds and lofts – placing items on the driveway. People are free to take what they want from each other.
	Green Halls – Village Hall committees organise an energy audit and carry out measures to reduce use – installing solar panels, insulation, double glazing, heat pumps, low energy bulbs, etc.

Health Wellbeing and Leisure	
Top 3 Priorities Identified	Potential Projects
1. Mental Health 2. Healthy Lifestyles 3. Support for Carers	Doorstep sports – A doorstep survey of sports interests then translated into a local sports programme
	The ecogym – Local outdoor conservation work that is great for fitness and wellbeing of volunteers. Could involve cleaning footpaths, decoration or gardening
	Strictly Ballroom – Dancing for seniors, encourages people to mix socially, stay active and fit
	Have a go – local sports and social clubs organise taster sessions
	Good gym – Runners, cyclists and walkers join to help the vulnerable by collecting prescriptions, shopping or dropping in for a chat
	The Onion shed – Cycle group adopts a local school and offers workshops in cycle skills maintenance and navigation
	Geocaching – Make use of this free software to find hidden clues and encourage healthy fun walking
	Fit Village – Local community-led campaign to get a community active that can involve a range of activities
	Fit for life – Sessions for older people based around gentle activities
	Link Schemes – To link with Good Neighbour work
	Memory Dances - A local dance group providing dance for the over 60s providing gentle dance and movement sessions for people with dementia
	Dementia Café – A drop in and self help session for people with dementia
	Short Mat Bowls – A fun, cost effective sports activity that can be played by all ages almost anywhere

Transport	
Top 3 Priorities Identified	Potential Projects
1. Road improvements 2. Access to public transport 3. Speeding and road safety	<p>Community Speedwatch – Local people undertake speed checks with support from police and the council</p> <p>Stay safe, stay alive – Road traffic awareness for the community groups provided by the F&R service. A hard hitting presentation aimed at changing behaviour</p> <p>Bike it – Villages and towns identify a safe route for cycling and walking to schools</p> <p>Community bus – A group of villages get together to fund a scheme</p> <p>Transport hub - A community based place or information board where community can access information to enable them to plan their journey. Can also be web based</p> <p>Lorry watch – Working with the council’s trading standards team, a local volunteer group monitor HGV movements in areas where there are weight restrictions</p> <p>Link schemes – also under older people</p>

Community Safety	
Top 3 Priorities Identified	Potential Projects
4. Anti social behaviour 5. Alcohol and drug abuse 6. Highway safety	Community Safety Partnership – Residents come together to work with schools, police and other partners to address safety issues with positive community action
	Pub watch schemes – Pubs linked to minimise underage drinking
	Lorry Watch – Working with the Council’s trading standards team, local volunteers monitor HGV vehicles reporting offences and initiating action
	Street wardens – Volunteers work with community policing to extend their reach and report concerns
	Neighbourhood Watch – Support Police on local areas to report concerns
	Community CCTV – Managed by local communities to monitor specific issues such as fly tipping
	Action on Traffic – Villages and towns focus on traffic issues at how to tackle speeding, congestion, dangerous parking with a view to changing behaviour
	Stay Safe, Stay Alive – Road traffic awareness for community groups provided by the Fire and rescue service. A hard hitting presentation for audiences aimed at changing driver behaviour

AMESBURY COMMUNITY AREA TRANSPORT GROUP 16 JANUARY 2017 ACTION NOTES

03	Item	Update	Actions and recommendations	Who
1.	Attendees and apologies			
	Present:	Wiltshire Councillors Ian West (Chair), John Smale, Graham Wright, Mike Hewitt, Julie Wharton, (Principal Engineer), Spencer Drinkwater (Transport and Development Manager (North and East)), Andy Cole (Local Highways Engineer - Amesbury and Tidworth Areas), Mo Atkinson, Graham Jenkins, Jackie Clark, Richard Deakins, Roy Gould, Keith Dobson, Ian Mitchell. Richard Harris		
	Apologies:	Robert Yuill, Amesbury Town Council		
2.	Notes of last meeting			
		The notes of the previous meeting were ratified at the Amesbury Area Board, 17 November 2016 . (click on link for webpage)	All agreed	All
3.	Financial Position			
		The final finance sheet is appended, the current financial position – £18,702 uncommitted.		

AMESBURY COMMUNITY AREA TRANSPORT GROUP 16 JANUARY 2017 ACTION NOTES

4.	Top 5 Priority Schemes			
a)	Orcheston C291 – 30mph implementation	The work order has been raised and is now with the contractor for programming however a completion date of the end of January has been requested.		JW
b)	Shrewton - review of the current weight limit.	<p>Shrewton PC withdrew their objection and therefore the works order has been raised with the contractor. The work is currently being programmed but a completion date of 24 March 2017 has been requested.</p> <p>The scheme has cost a lot less than anticipated as a lot of the larger signs have been funded by the Local Safety Scheme; therefore £5000 has been released back into the available budget. Therefore suggest that Shrewton PC's contribution is also halved.</p>	The group agreed to reduce Shrewton PC's contribution to £1050.	JW
c)	Winterbourne Earls – Closure of the Fords	The TRO was advertised and approximately 40 objections were received. JW to review the objections and discuss with Parish Council and local member.	The group discussed the available budget for any works and agreed to set aside an additional £1000.	JW
d)	Great Wishford – 20mph	The works order is currently being prepared to send to the contractor. However the works will not take place until the new financial year.	Work order is ready to go in the new financial year	JW
e)	London Rd, Shrewton - Request for buildouts.	This has been made a priority as the work to Amesbury TC is complete. The group agreed to spend £2500 on a topographical survey and provisionally set aside £10,000 towards any proposed scheme.	The group agreed to spend £2500 on a Topographical survey.	JW

AMESBURY COMMUNITY AREA TRANSPORT GROUP 16 JANUARY 2017 ACTION NOTES

			<i>*The quote for the Topographical survey has come back at £3300 which is due to the length of road needed to be surveyed.</i>	
5.	Other Priority schemes			
a)	Issue 4053 High Street/A360 Shrewton – Various lining works	Shrewton PC is currently consulting residents and will feedback in due course. The group agreed to provisionally set aside £3000 for this scheme which would be reviewed once further design work had taken place however no further work will take place until made a top 5 priority for the group.	The group agreed to provisionally allocate £3000 for this scheme.	PC
b)	Issue 4426 Tanners Lane, Shrewton – measures to prevent no 1. being struck by vehicles	Awaiting implementation of 3.5t weight limit.		
c)	Issue 4427 Parsons Green, Shrewton – No through road sign.	The work has been completed and therefore the PC will be invoiced on receipt of final account. Suggest this issue is now closed.	The group agreed to close the issue.	CATG
d)	Issue 4545 Church Street, Winterbourne Stoke – request for waiting	The PC has confirmed they will fund the requested contribution of 25% (£500). Will be progressed when made a top 5 priority by the group. Suggest combined with Amesbury TC order	The group agreed to combine the waiting restrictions and make them a top 5 priority when the	CATG

AMESBURY COMMUNITY AREA TRANSPORT GROUP 16 JANUARY 2017 ACTION NOTES

	restrictions.		next slot becomes available.	
e)	<p>Issue 4636</p> <p>Old Road - SP4 0EQ</p> <p>Request for street light or illuminated bollard.</p>	<p>The work to install the hazard marker posts has been completed. Suggest that the issue is closed.</p> <p>The group discussed the recent collisions that have occurred at the same place and demolished the bollards and therefore additional works were requested to erect some chevron boards. JW suggested this would cost approximately £5000 to erect boards and some additional hazard marker post.</p> <p>Work will take place when made a priority for the group.</p>	The group agreed to fund a further scheme for the cost of £5000.	CATG
f)	<p>Issue 4742</p> <p>High Street/Salisbury Street. Amesbury.</p> <p>Reduce on street parking in town centre from one hour to 30 minutes.</p>	<p>Amesbury Town Council has confirmed that they wish to proceed and therefore the scheme can progress when made a priority by the group.</p> <p>The group agreed that this work should be prioritised with Winterbourne Stoke in order to share legal costs and that of getting the lining machine into the area.</p>	The group agreed to combine the waiting restrictions and make them a top 5 priority when the next slot becomes available.	CATG
g)	<p>Issue 4743</p> <p>20 mph speed limit in town centre and weight limit 7.5 tonnes except for deliveries and agricultural vehicles.</p>	<p>TC stated that the weight limit was more critical than the 20mph. The CATG agreed to close the issue and allocate the C350 as one of the roads to go forward for FAPM.</p>	The C350 was put forward for the FAPM assessment therefore the issue will now be closed.	CATG

AMESBURY COMMUNITY AREA TRANSPORT GROUP 16 JANUARY 2017 ACTION NOTES

h)	<p>4774</p> <p>High Post Road, Netton.</p> <p>Measures to improve give way signing at the junction.</p>	<p>A scheme to implement improvements has been sent to the PC who discussed at their meeting in December and is happy with the proposals but do not feel that they can afford much of a contribution.</p> <p>CATG agreed to fund the more substantial bollards as AC reported that the existing light plastic ones erected by the PC have already been knocked down.</p>	<p>The group agreed to fund the £1200 for the bollards if the PC were able to make a minimal contribution of £100.</p>	JW
6.	New Requests / Issues			
a)	<p>4968</p> <p>Junction of The Portway & the A338 (SP4 6JL)</p> <p>Road structure signage change at the site in order to slow vehicles at the on approaches to the roundabout.</p>	<p>The Parish Council has received Parishioner concern of the roundabout located at the end of the Winterbournes and the Portway nearest postcode is SP4 6JL. There have been a number of apparent accidents. The roundabout is thought to be too small in diameter and doesn't appear to slow the traffic. The Parish Council would like to request that the item be added to the next available CATG meeting with advice there sought as to what improvements can be made at the site if any.</p> <p><i>When the Collision Database review took place this year it, this location had 3 collisions that resulted in slight personal injury with few common factors and was therefore listed for no further action. As two additional collisions took place in 2016, the site will resurface in the next cluster site list and will therefore be reviewed again in 2017.</i></p>	<p>The group agreed to await the outcome of next year's LSS prioritisation but will leave the issue open until this is known.</p>	
b)	<p>5009</p> <p>Salisbury Road, Bulford</p> <p>Measures to prevent large military vehicles using</p>	<p>Residents and road users going over Telegraph Hill to and from Bulford Solstice Park when coming up against Light Equipment Trailers LET Warrior Armoured Tracked vehicles and AFV 432 tracked</p>	<p>The group agreed to close the issue.</p>	CATG

AMESBURY COMMUNITY AREA TRANSPORT GROUP 16 JANUARY 2017 ACTION NOTES

	Telegraph Hill.	<p>vehicles. Also causing damage to the road and kerbs.</p> <p>As the Local County Councillor I have had discussions with the Garrison Commander and wish to discuss the issue with CATG.</p> <p>I would like the impact assessed and to obtain repair funding from the Military and look at instigating traffic control on which roads can be banned by these over wide vehicles. We have agreements with the firms in Solstice Park not to use Telegraph Hill - why not the Military.</p> <p><i>The group discussed the issue but as there was no action for them it was decided it could be closed.</i></p>		
c)	<p>5064</p> <p>Various locations, Durrington. Request for waiting restrictions</p>	<p>New double yellow lines as reviewed by Wiltshire Councillor Graham Wright and Wiltshire Council Traffic Engineer Julie Wharton on 4 Jan 2017.</p> <p>Durrington Town Council has approved £1500 towards the cost of the scheme. The group agreed to fund an additional £1000 towards the work.</p> <p>JW to check with the Network Management team that there are no other requests for waiting restrictions in the area.</p>	<p>The group agreed to support the scheme and allocate an additional £1000 from its budget. The group agreed to combine the 3 issues referring to waiting restrictions and make them a top 5 priority when the next slot becomes available.</p>	JW
7.	Any other items			

AMESBURY COMMUNITY AREA TRANSPORT GROUP 16 JANUARY 2017 ACTION NOTES

a)	FAPM	SD outlined the process that was explained in detail last year. It was agreed that last year's presentation would be sent out again with the minutes. The group agreed to put the A345 & Church Street, Amesbury forward as their two priorities for assessment in 2017/2018.		SD
b)	Parish Steward	AC stressed the importance of completing the returns each month even if the same work is required. If the Parish Stewards are not seen to be well used by the Parishes then in the current economic climate the service would be at risk of being reduced or removed altogether.		PC
8.	Date of Next Meeting: 15 May 2017, 10am, Redworth Centre, Amesbury Leisure Centre, Amesbury			

Amesbury Community Area Transport Group

Principal Engineer – Julie Wharton

1. Environmental & Community Implications

1.1. Environmental and community implications were considered by the CATG during their deliberations. The funding of projects will contribute to the continuance and/or improvement of environmental, social and community wellbeing in the community area, the extent and specifics of which will be dependent upon the individual project.

2. Financial Implications

2.1. All decisions must fall within the Highways funding allocated to Amesbury Area Board.

2.2. If funding is allocated in line with CATG recommendations outlined in this report, and all relevant 3rd party contributions are confirmed, Amesbury Area Board will have a remaining Highways funding balance of **£2,202**.

3. Legal Implications

AMESBURY COMMUNITY AREA TRANSPORT GROUP 16 JANUARY 2017 ACTION NOTES

3.1. There are no specific legal implications related to this report.

4. HR Implications

4.1. There are no specific HR implications related to this report.

5. Equality and Inclusion Implications

5.1 The schemes recommended to the Area Board will improve road safety for all users of the highway.

6. Safeguarding implications

6.1 There are no specific safeguarding implications related to this report.

The first year



The First Year

V 1.0 Feb 2017

The first year

Farleys Malone Community

Amesbury Area Demographic and need

43% of people aged over 65 in the Amesbury Community Area are at high risk of social isolation. The Amesbury Community Area also has fewer unpaid carers than the Wiltshire Average, therefore increasing the risk of ill health and loneliness amongst older and vulnerable people within the community. Wiltshire Council statistics confirm that there are 268 adults aged over 85 in the Amesbury Community Area, of which a significant number are on-going clients of Farleys Malone Community. However, there are many more who are the "unknown and invisible" in society and often not on anyone's radar.

What we do

Having identified the need we researched how we could best provide this service. On the first of April 2016 Farleys Malone Community was created and in October 2016 was awarded Charitable Status.

Farleys Malone Community works across the Amesbury Community Board Area, offering information, support, signposting, and safeguarding to those most vulnerable in the community. It provides much needed help and support to those who need it most.

Our Community Consultant bridges the gap between the Volunteer Services within the community and the professional services offered by statutory bodies, offering local services to local people in order to assist them to stay safe and well in their own homes or wherever they wish to be. With the reduction of services from Local Authorities this service is needed now more than ever.

Over the past 9 months we have made over 217 home visits, run 3 community outings and provided 760 meals at 30 community lunches. We currently have 77 active clients.

We have participated in 53 events local to the Amesbury Community Area to highlight the service.

Without this service, those most vulnerable in the Amesbury Community Area who are unable to navigate their way through the minefield of information provided on line for their future and benefit, would be left in the dark. We are providing mobile internet connectivity for the completion of necessary forms and surveys which directly effect their lives, and which can be completed in their own homes or community gatherings.

As an independent confidential service our success for the wider community is in the reduction of hospital admissions, calls to social services, reduced GP appointments and most definitely a reduction in emergency unplanned care. Encouraging those who are socially isolated to reintegrate into the community and enjoy a long and fulfilling life.

We encourage Service Users to manage as much of their own affairs as possible helping them to stay independent. We accept referrals from all the statutory and voluntary agencies as well as families, neighbours and concerned individuals.

You can donate online via web site www.farleysmalonecommunity.org